



**CASSIAR GOLD**

TSX.V:GLDC | OTCQX:CGLCF | FRA:756

**ADVANCING THE HISTORIC  
CASSIAR GOLD DISTRICT IN  
BRITISH COLUMBIA, CANADA**  
持续推进加拿大卑诗省历史悠  
久的**CASSIAR**黄金产区

**CASSIAR GOLD CORP**

Corporate Presentation – September 2024

公司介绍-2024年9月

# Disclaimer / 免责声明



Cassiar Gold Corp. (“Cassiar Gold” or the “Company”) has taken all reasonable care in producing and publishing the information contained on this presentation and will endeavor to do so regularly. Material on this presentation may still contain technical or other inaccuracies, omissions or typographical errors, for which the Company assumes no responsibility. Neither Cassiar Gold nor any of its current or proposed directors, officers, owners, managers, partners, consultants, employees, affiliates or representatives, make any warranty or representation, whether express or implied, or assume any legal liability or responsibility for any action taken in reliance upon the information contained in this presentation, or for the accuracy, completeness, or usefulness of any information disclosed. Furthermore, you may not modify or reproduce in any form, electronic or otherwise, any information in this presentation, except for personal use unless you have obtained the Company’s express permission.

This presentation, and the material contained hereon, is not intended as a solicitation, offering or recommendation of securities in any jurisdiction and the information contained herein in no way should be construed or interpreted as such. No securities commission or other regulatory authority in Canada or any other country or jurisdiction has in any way passed upon this information and no representation or warranty is made by the Company to that effect. The sole purpose of this presentation is for information purposes. The information outlined in this presentation is not a substitute for independent professional advice before making any investment decisions, and is not intended to provide, and should not be relied upon for, accounting, legal or tax advice or investment advice. Any investment in the Company is speculative and involves a high degree of risk.

The TSX Venture Exchange has not reviewed and does not accept responsibility for the adequacy or accuracy of the information in this presentation.

Certain information set forth in this presentation contains “forward-looking information” and “forward-looking statements” (collectively referred to as “forward-looking statements”) within the meaning of applicable Canadian securities legislation, Section 27A of the Securities Act of 1933 in the United States of America, as amended, and Section 21E of the Securities Exchange Act of 1934 in the United States of America, as amended.

Statements in this presentation other than purely historical information are forward-looking statements. Forward-looking statements include statements regarding: expectations on the size of the mineral resources on the Company’s properties, timing of ability to obtain resource reports and preliminary economic assessments, plans for mineral processing, timing and ability to raise capital and use of proceeds of such financings, long-term acquisition and developments plans, and the ability to enter into acquisition or option agreements and the timing and terms of same. Generally, forward-looking statements can be identified by the use of forward-looking terminology such as “plans”, “expects” or “does not expect”, “is expected”, “budget”, “scheduled”, “estimates”, “forecasts”, “intends”, “anticipates”, “does not anticipate”, or “believes”, or variations of such words and phrases that state that certain actions, events or results “may”, “could”, “would”, “might” or “will be taken”, “occur” or “be achieved”. Forward-looking statements are based on management’s expectations and reasonableness assumptions at the time such statements are made and are subject to all of the risks and uncertainties inherent in the Company’s business, including risks inherent in resource exploration and development. As a result, actual results may vary materially from those described in this presentation. Accordingly, readers should not place undue reliance on forward looking statements. Except as required by Canadian securities law, neither the Company nor its management undertakes to update any forward-looking statements in this presentation.

Unless stated otherwise, information pertaining to the Taurus Deposit Resource of the Cassiar Gold Property is summarized, derived or extracted from, respectively, the technical report titled “National Instrument 43-101 Technical Report on the Cassiar Gold Property” prepared for the Company by Scott Zelligan, P.Geol., James Moors, P.Geol., Chantal Jollette, P.Geol. with an effective date of April 28, 2022. Scott Zelligan, P.Geol., James Moors, P.Geol., and Chantal Jollette, P.Geol., are all independent as defined by NI 43-101 — Standards of Disclosure for Mineral Projects (“NI 43-101”). Unless stated otherwise, information pertaining to the Sheep Creek Property is summarized, derived or extracted from the technical report titled “NI43-101 Technical Report on the Sheep Creek Project” by Robert A. Lane, MSc, P.Geol. with an effective date of August 17, 2017. Robert A. Lane, MSc, P.Geol. is independent as defined by NI 43-101 — Standards of Disclosure for Mineral Projects.

Qualified Person: Jill Maxwell, P.Geol., VP Exploration, is a "Qualified Person" as defined under NI 43-101 and has reviewed and approved the technical content of this presentation.

# Why Cassiar Gold? Checking the Boxes

## 为什么选择Cassiar Gold? 投资亮点



### INFRASTRUCTURE & PERMITS IN SAFE JURISDICTION / 安全辖区内的基础设施和许可证

- ✓ 2 Mine permits, bisected by provincial highway 37, 160 km of access roads, fully owned & permitted 300 tpd mill, 17 portals, 25 km underground workings, power & water access, permanent camp already in place / 拥有两个采矿许可证, 37号省道将项目区一分为二, 拥有160公里长的通道, 完全拥有并获得许可的日均处理300吨矿石的工厂, 17个入口, 25公里长的地下作业区, 水电供应, 永久性采矿营地
- ✓ 100% owned, 59,000-hectare district-scale property in safe & stable British Columbia, Canada / 100%拥有位于加拿大卑诗省安全稳定辖区内59,000公顷地区规模项目区



### SIGNIFICANT EXPANSION & DISCOVERY POTENTIAL / 具有显著的资源扩展和发现潜力

- ✓ Potential to expand Taurus Resource of 1.4 Moz @ 1.14 g/t Au<sup>1</sup> in most directions laterally & at depth / Taurus推断资源量为140万盎司, 金品位为1.14克/吨, 在大部分方向有向水平和纵深扩展的潜力
- ✓ Potential for multiple bulk-tonnage/Taurus style satellite deposits across the land package / 在整个项目区内有可能形成多个大吨位或者类似Taurus风格的矿床
- ✓ Potential to expand multiple high-grade vein targets grading 10-20 g/t Au<sup>1</sup> along strike & down dip, with additional discovery potential for multiple blind parallel as well as stacked shear vein systems / 多个高品位矿脉靶区, 金品位在10-20克/吨之间, 成功延伸并且沿走向仍然开放, 而且具备形成多个未出露平行及堆叠的剪切矿脉系统的潜力



### EXPERIENCED LEADERSHIP TEAM / 经验丰富的领导团队

- ✓ Well rounded & extremely successful group of geologists, engineers, operators, marketing and capital markets professionals with 250+ collective years in discovering, building, operating, and selling multi-billion dollar mining projects all over the world / 一支由经验丰富且功成名就的地质学家、工程师、运营商、市场营销和资本市场专业人士组成的团队, 加起来拥有250多年在全球范围内发现、建设、运营和出售价值数十亿美元矿产项目的经验



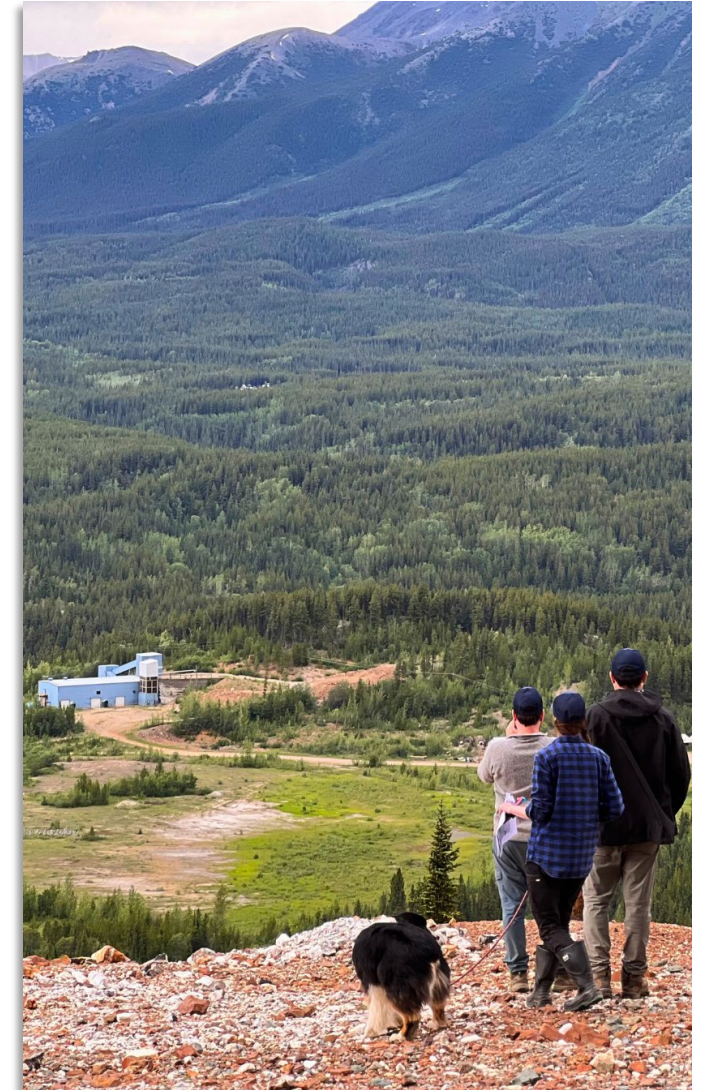
### COMMUNITY SUPPORTED & ENVIRONMENTALLY COMMITTED / 社区支持和环境承诺

- ✓ Collaborative & mutually supportive relationship with Community and Kaska Dena First Nations, including the training, hiring and development of local workforce and contractors / 与社区和Kaska Dena原住民建立对社会负责的合作关系, 包括支持对本地劳动力和承包商的培训、雇用和发展
- ✓ Committed to advancing the projects under the highest ESG practices with continuous & transparent reporting / 致力于以最高的ESG实践和持续透明的报告推进项目



### UNDERVALUED WITH TREMENDOUS UPSIDE POTENTIAL / 价值被低估, 增长潜力巨大

- ✓ C\$34.1 M Market Cap\* with significant leverage to the gold price, well capitalized, strong institutional support / 市值3410万加元\*, 对金价有显著的杠杆作用, 资金充足, 得到机构的强力支持
- ✓ Focused on growing & de-risking the project to maximize Acquisition/Sale value via M&A Exit strategy / 专注于扩大规模并降低项目风险, 通过并购退出策略实现收购/出售价值最大化
- ✓ Strategic optionality to "bootstrap" to production leveraging existing skillset, infrastructure and mine permits / 在战略上可以选择利用现有的技能、基础设施和采矿许可“启动”生产



# Tremendous Potential: BC's Inland Orogenic Gold Belt

## 巨大的地质潜力：卑诗省内陆造山金矿带



- The Cassiar Gold property is hosted within British Columbia's inland belt of orogenic gold systems (140-120 Ma), with similarities to prolific orogenic gold districts such as the **Abitibi Greenstone Belt** and gold camps of Western Australia. / Cassiar黄金项目区位于卑诗省内陆造山型金矿带上（距今1.4-1.2亿年）-与阿比提比绿岩带、西非和西澳大利亚（如Fosterville）的地质环境相类似。

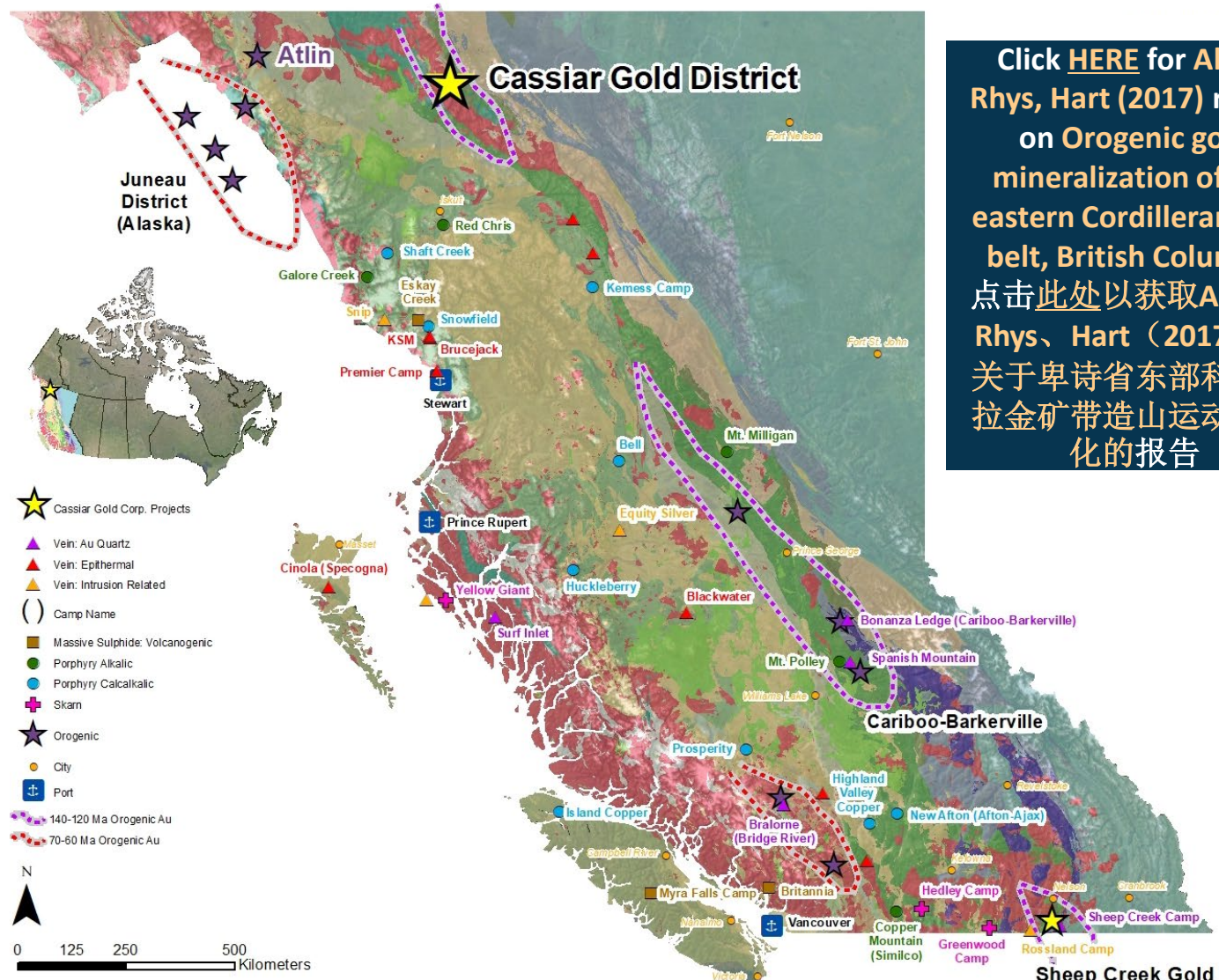
**Gold Reserves in prolific orogenic gold districts:** / 位于多产的造山型金矿产区的黄金储量:

- Abitibi Greenstone Belt: **>340 Moz Au<sup>1</sup>** (Past Production, Reserves & Resources) / 阿比提比绿岩带: **超过3.4亿盎司黄金** (过去的产量、储量和资源量)
- Yilgarn Craton: **>350 Moz Au<sup>2</sup>** (Past Production, Reserves & Resources) / **超过3.5亿盎司黄金** (过去产量、储量和资源量)

**Under-explored orogenic gold camps of BC:** / 卑诗省未充分勘探的造山型金矿区包括:

Cariboo-Barkerville (>5 Moz), **Sheep Creek** (0.7 Moz) and **Cassiar Gold District** (>0.4 Moz). / Cariboo-Barkerville (超过500万盎司)、**Sheep Creek** (70万盎司) 以及**Cassiar金矿区** (超过40万盎司)

- Orogenic Gold production accounted for 45% of all overall production in BC up to 2002 / 截至2002年, 造山金矿的产量占到卑诗省黄金总产量的45%<sup>3</sup>



Click [HERE](#) for Allan, Rhys, Hart (2017) report on Orogenic gold mineralization of the eastern Cordilleran gold belt, British Columbia  
 点击[此处](#)以获取Allan、Rhys、Hart (2017年) 关于卑诗省东部科迪勒拉金矿带造山运动金矿化的报告

<sup>1</sup> Mercier-Langevin et al. (2020b); GSC Open File Report 8712  
<sup>2</sup> Sumail et al. (2024b); Temporal constraints on gold mineralization at the world-class Jundeed deposit...; Precambrian Research, Vol. 10  
<sup>3</sup> Allan, M.M et al. (2017); GBC Report 2017-15

# Premier Mining Jurisdiction Attracting Global Miners

## 吸引全球矿商的顶级矿业管辖区



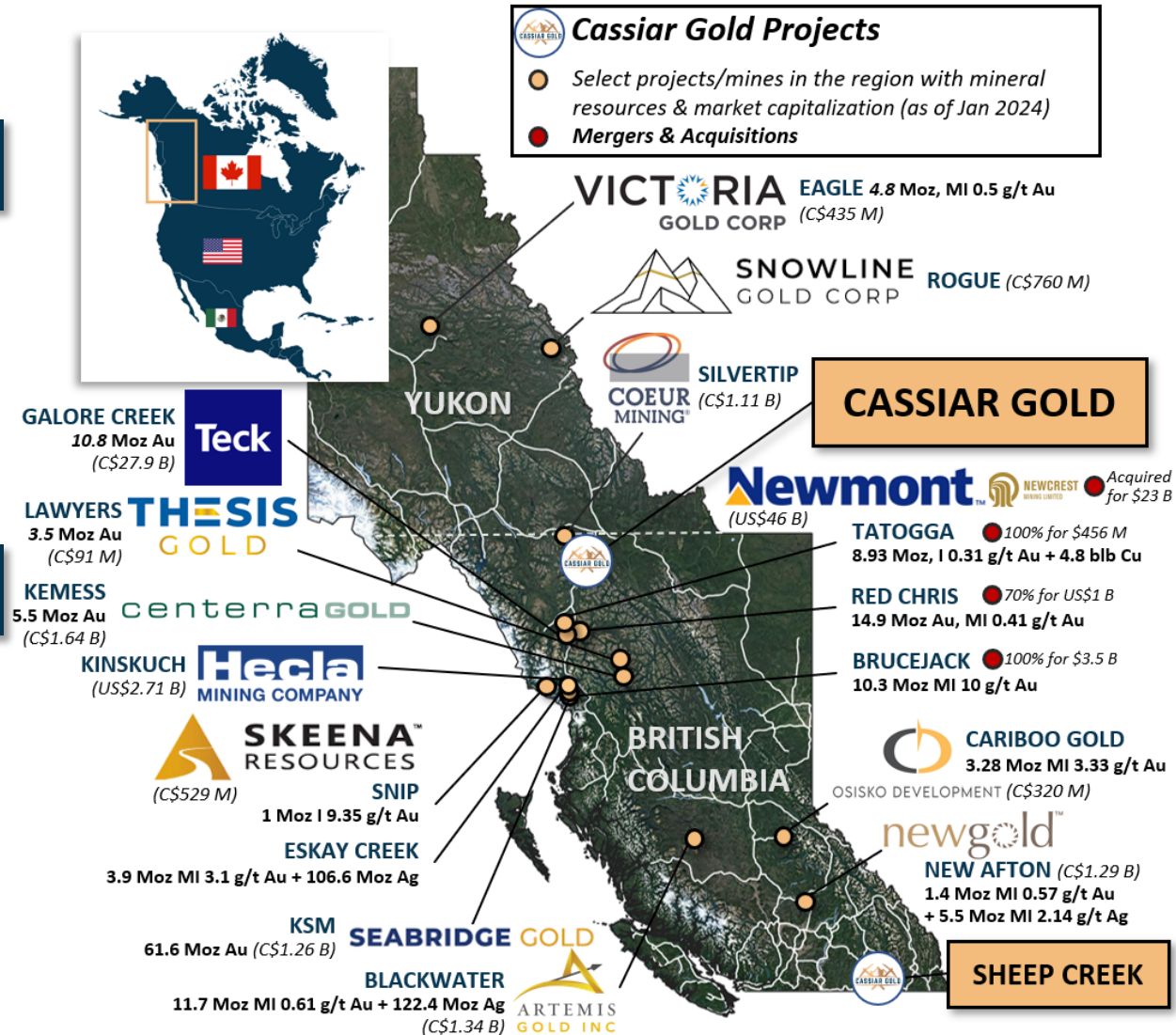
Control over 2 major **orogenic gold districts** in BC:  
控制卑诗省两个重要的**造山运动金矿区**：

### 1 Cassiar Gold FLAGSHIP PROPERTY / 旗舰项目区

- 100% owned, 59,000-hectare district-scale orogenic gold system in the safe and stable jurisdiction of British Columbia, Canada. / 100%拥有，位于加拿大卑诗省安全稳定辖区内的59,000公顷区域规模造山金矿系统。
- Site of historical Cassiar Gold Rush with total historic gold production of 425,000 oz<sup>1</sup> / 历史上Cassiar淘金热所在地，历史黄金总产量达到42.5万盎司<sup>1</sup>

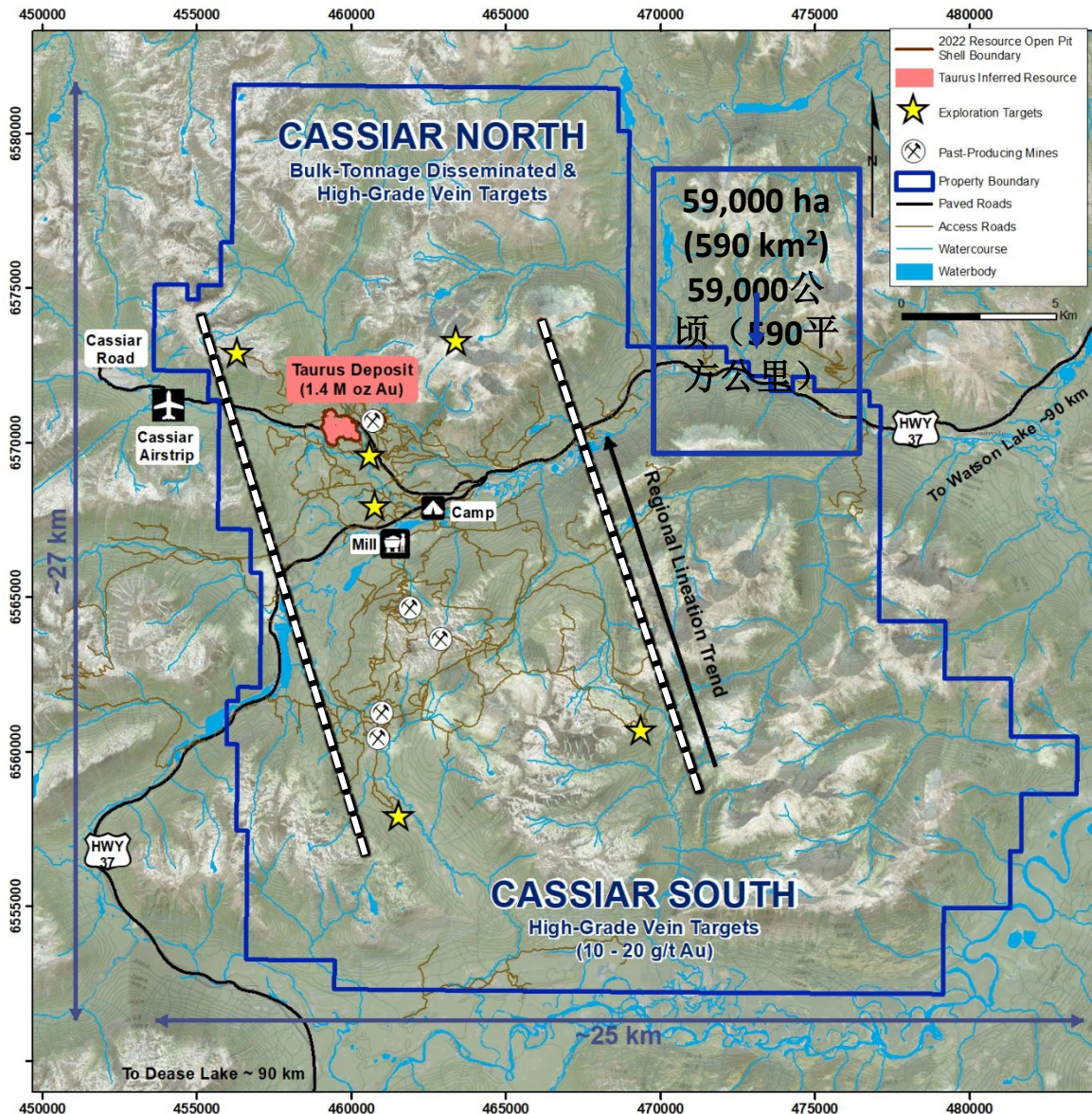
### 2 Sheep Creek

- 3rd largest past-producing orogenic gold district in BC with historical gold production (1899 - 1951) of 742,000 oz Au @ 14.7 g/t Au<sup>2</sup> / 卑诗省过去第三大造山型金矿区，历史黄金产量（1899-1951年）估计为742,000盎司，平均金品位为14.7克/吨<sup>2</sup>
- Excellent exploration potential** – little exploration carried out since the 1950s - review in progress for exploration opportunities / **勘探潜力巨大**-自20世纪50年代以来几乎没有进行过勘探，正在审查进一步的勘探机会



# Property Overview District-Scale Potential

## 项目区概述 有形成地区规模的潜力



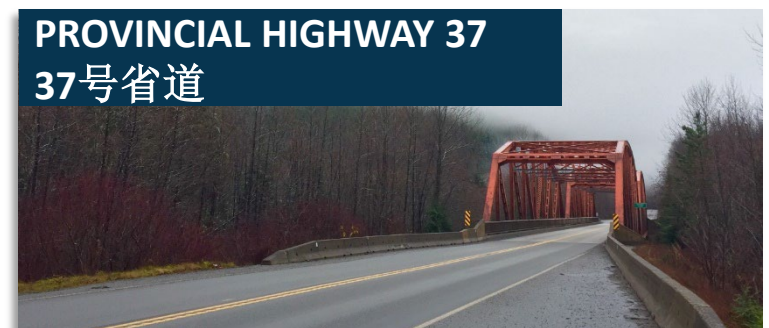
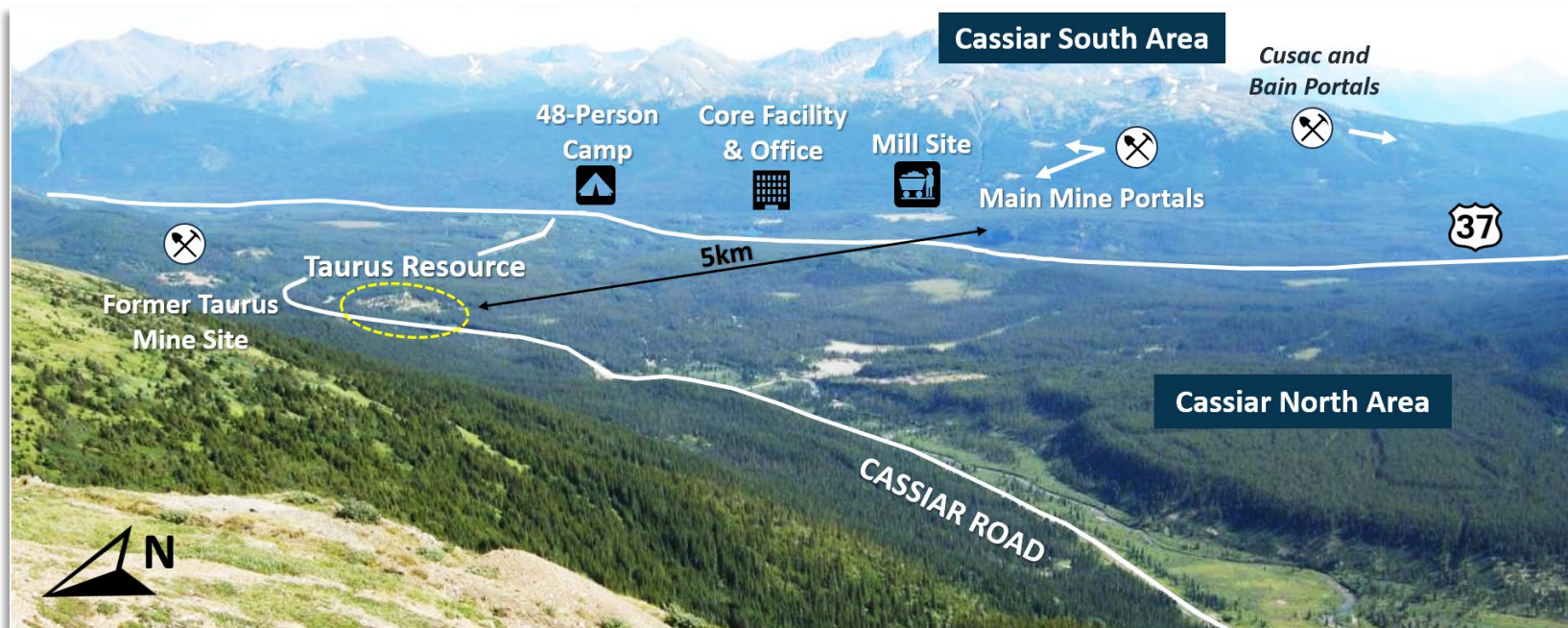
- **+15 km N-S strike length of gold targets.** / 南北走向长度超过15公里，拥有多个黄金靶区。
- **Exploration Opportunity:** Expand property resource base, advance exploration through deposit expansion, optimization, and the potential for new discoveries in the Cassiar District. / **勘探机会:** 扩大项目区资源量基础，通过扩大矿床规模、矿床优化以及在Cassiar地区发现新矿藏的可能性来推进勘探工作。
- **TWO KEY PROJECT AREAS:** / 两个关键的项目领域：
  1. **CASSIAR NORTH (North of Highway 37):** near-surface, bulk-tonnage **Taurus Deposit** hosting **1.4 Moz Au @ 1.14 g/t Au<sup>1</sup>** inferred mineral resource which is open for expansion laterally and at depth. **Multiple near surface targets across the property** with similarities to the Taurus Deposit. / **CASSIAR NORTH (37号公路以北):** 接近地表，**Taurus**大吨位金矿床的推断资源量为**140万盎司黄金**，金品位为**1.14克/吨**，有向水平和深处扩展的潜力。整个项目区内还有多个与Taurus矿床相似的近地表靶区。
  2. **CASSIAR SOUTH (South of Highway 37):** Past-producing **high-grade quartz vein deposits (10-20 g/t Au)<sup>1</sup>** open along strike & down dip, as well as potential for **multiple blind parallel and stacked vein systems.** / **CASSIAR SOUTH (37号公路以南):** 过去生产的高品位石英脉矿床（金品位**10-20克/吨**）<sup>1</sup>沿走向和向下倾延伸，并可能存在多个平行和堆叠的未出露矿脉系统。
- **Similar mineralization style to Fosterville and Barkerville,** the property hosts over 90 Minfile showings and over 70 known individual veins or segments. / 与**Fosterville**和**Barkerville**的矿化风格相似，项目区拥有90多个标注的表象区和70多个已知的单个矿脉或分段。

<sup>1</sup> Zelligan, Moors, Jollette, April 28, 2022. National Instrument 43-101 Technical Report on the Cassiar Gold Property, prepared for Cassiar Gold Corp. / Zelligan、Moors、Jollette, 2022年4月28日。为Cassiar Gold Corp.编写的关于Cassiar Gold黄金项目区的NI43-101技术报告。

# Outstanding Access Surrounded by Infrastructure 交通便利，基础设施环绕



- Paved Provincial Highway 37 bisects the property with year-round access and connected to the paved Cassiar road passing through the Taurus Deposit area. / 铺设好、四季通车的37号省道将项目区一分为二，铺设好的Cassiar公路穿过Taurus矿床。
- Permanent camp with power & water access along with 160 km of property access roads. / 永久性采矿营地有水电供应，160公里长进出项目区的道路。
- 1.2 km Cassiar airstrip just 5km from the Taurus Deposit. / 1.2公里长的Cassiar简易飞机跑道就在Taurus矿床5公里外。



# Key Infrastructure Already in Place / 关键基础设施已经到位



**17 HISTORICAL PORTALS**  
17个历史矿井入口



**25KM UNDERGROUND WORKINGS**  
25公里的地下作业区



**POWER LINES**  
供电线路



**300 TPD FULLY OWNED & PERMITTED MILL**  
完全自有且获准的日均300吨矿石加工厂



**TAILINGS FACILITIES**  
岩心棚和几处尾矿设施



**160KM OF PROPERTY ACCESS ROADS**  
160公里的项目区通道



**48-PERSON CAMP**  
with Grid Power & Water  
可容纳48人的采矿营  
有电网供电和供水



Click [HERE](#) to explore the property using our **VIRTUAL TOUR!**  
点击此处通过虚拟游览探索我们的项目区!



# 2 Mine Permits and Fully Owned & Permitted Mill

## 2个采矿许可证和完全自有并获得许可的加工厂



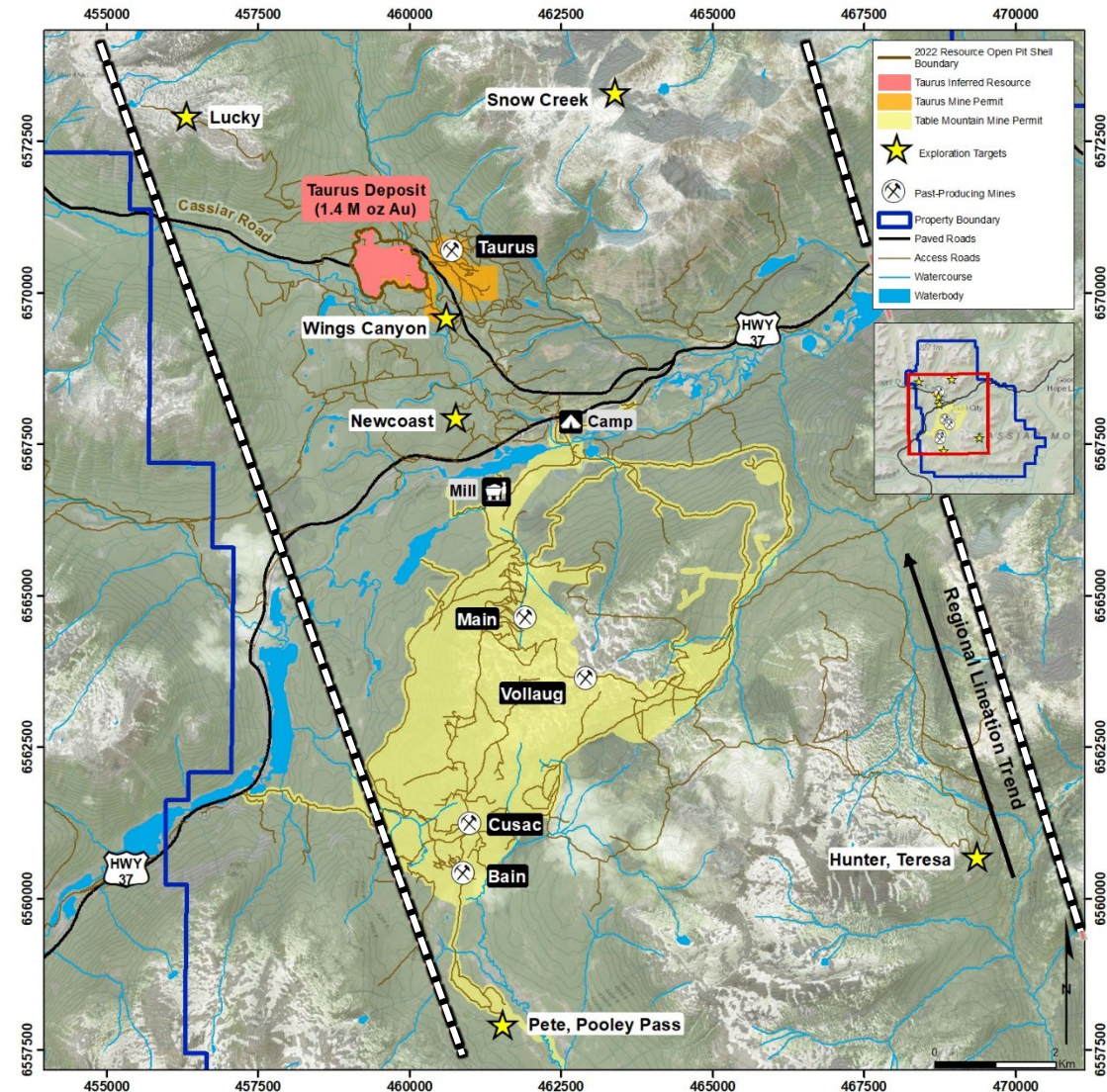
- In addition to having an exploration permit, there are two mine permits on the property (orange/yellow areas on map): / 除了勘探许可证之外，该项目区还有两个采矿许可证（地图上的橙色/黄色区域）：

**Taurus Gold Mine Permit (M-149) (1.2km<sup>2</sup>)** covers the past-producing Taurus Mine; the majority of the current Taurus resource footprint; 2 tailings facilities and former mill site. / **Taurus金矿许可证 (M-149)** (面积1.2平方公里) 涵盖过去生产的Taurus矿；目前Taurus金矿资源版图的大部分；2个尾矿设施和之前的磨矿厂场地。

**Table Mountain Permit (M-127) (20km<sup>2</sup>)** at Cassiar South covers all past-producing mines on Cassiar South, 2 tailings facilities, and 300 tpd mill. / **Table Mountain许可证 (M-127)** (面积20平方公里) 涵盖了Cassiar South所有过去生产的矿山、2个尾矿设施和日均加工300吨矿石的工厂。

- Fully owned & permitted 300 tpd mill produced **both gravity and flotation concentrates** that were sold offsite. Mill was last in production in 2007<sup>1</sup>, partially refurbished in 2010 and currently in good condition. / 完全拥有并获得许可的日均处理300吨矿石的磨矿厂通过重力和浮选生产精矿，并在场外出售。磨矿厂最后一次生产是在2007年，2010年进行了部分翻新，目前状况良好
- Recoveries averaged 93%<sup>2</sup> and up to 96% at Cassiar South. / 平均采收率为93%，Cassiar South的采收率高达96%。

Fully Owned & Permitted Erickson Mill Facility  
完全自有并获得许可的Erickson磨矿设施



<sup>1</sup> Zelligan, Moors, Jollette, April 28, 2022. National Instrument 43-101 Technical Report on the Cassiar Gold Property, prepared for Cassiar Gold Corp. / Zelligan, Moors, Jollette, 2022年4月28日。为Cassiar Gold Corp. 编写的关于Cassiar Gold黄金项目区的NI43-101技术报告。

<sup>2</sup> Cowley, 2017. NI43-101 Technical Report on the Cassiar Gold Property, British Columbia, Canada, for China Minerals Mining Corp, June 26, 2017, revised Oct. 2, 2017, and references therein / Cowley, 2017年6月26日为China Minerals Mining Corp. 编写的加拿大卑诗省Cassiar Gold项目区NI43-101技术报告，2017年10月2日修订，以及其中的参考文献。

# District-Scale with Significant Discovery Potential

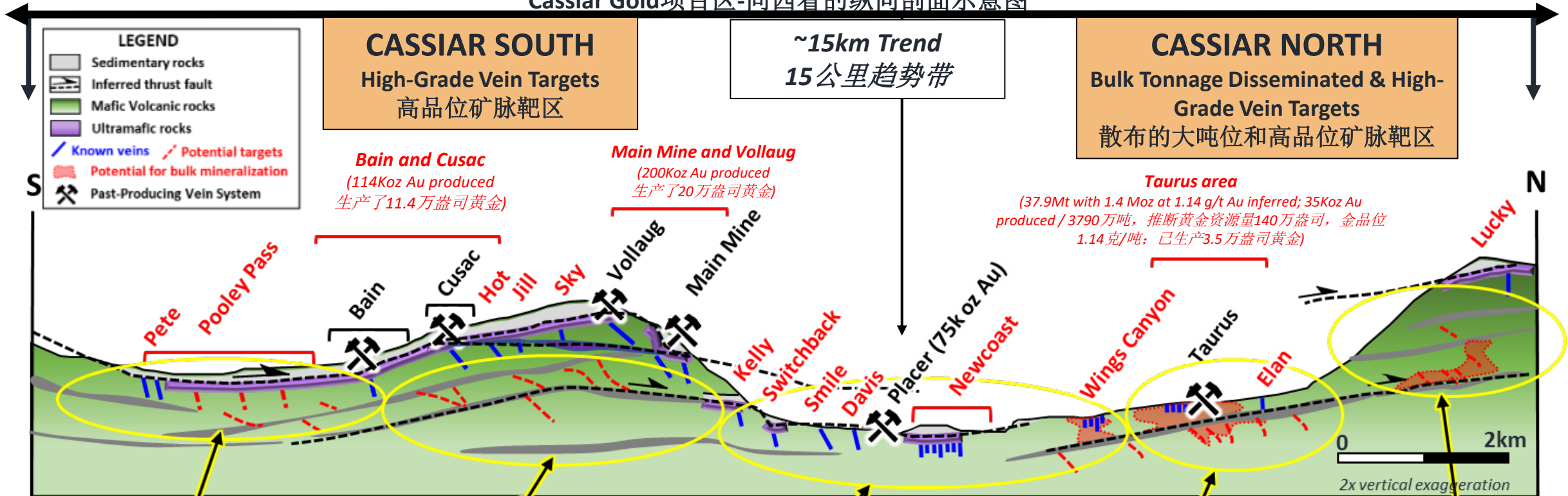
## 具有重大发现潜力的地区规模项目



Click [HERE](#) to watch the Technical Presentation hosted by David Rhys! / 点击此处观看由David Rhys主持的技术演示!

Cassiar Gold Property - Schematic Longitudinal Section, Looking West

Cassiar Gold项目区-向西看的纵向剖面示意图



Underexplored area with opportunity for discovery and advancement  
未充分勘探的区域蕴藏着发现和向前推进的机会

Potential for extension along strike and down dip of known vein systems, as well as potential for parallel and stacked vein systems  
沿已知矿脉系统走向和向下倾延伸的潜力，以及平行和堆叠矿脉系统的潜力

Multiple targets underexplored with significant potential for advancement / 多个尚未充分勘探的靶区具有巨大的推进潜力

Taurus: Potential resource expansion laterally and at depth  
Taurus: 横向和纵深的资源扩展潜力

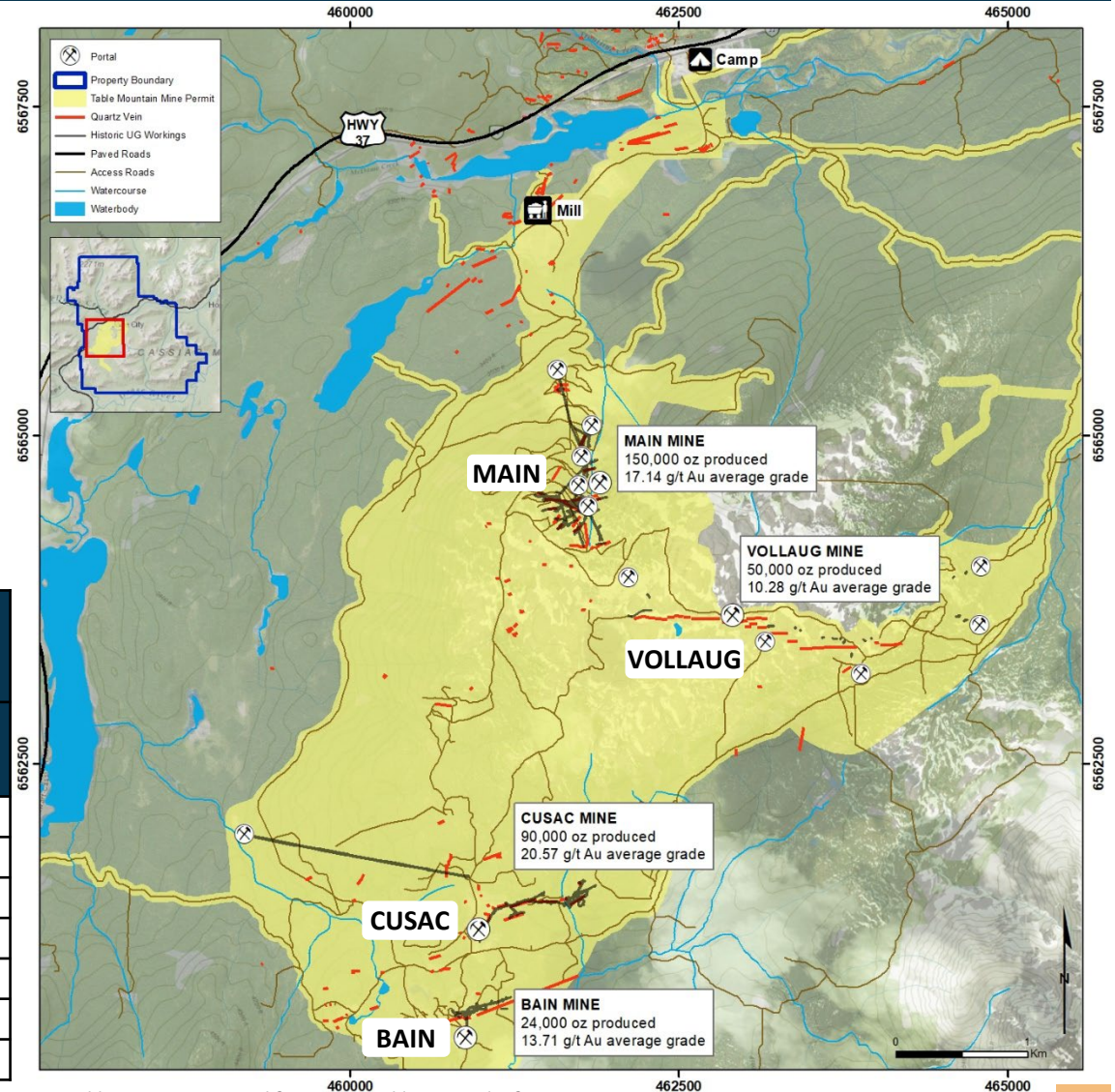
Both shallow and moderate depth targets with high discovery potential / 既有浅层靶区，也有中等深度靶区，有很大的发现潜力

# Cassiar South: High-Grade History & Potential

## Cassiar South: 高品位历史与潜力



- Multitude of shear quartz vein gold targets with historical production of **~315,000 oz<sup>1</sup> from four vein systems and 15 portals.** / 大量剪切石英脉黄金靶区，**4个矿脉系统和15个矿井入口**，历史黄金产量约为**31.5万盎司**。
- Historical recovered grades of **~10-20 g/t Au<sup>1</sup>** with mine dilution. / 经过稀释后，历史采收品位大约在**10-20克/吨**之间
- Past-producing vein systems **hosted up to ~150koz Au and known vein prospects occur roughly 400 to 600 m apart.** / 过去生产的矿脉系统**蕴藏了多达约15万盎司黄金**，已知的矿脉前景区之间相距约**400至600米**。
- **High-Grade Discovery Opportunities:** / **高品位发现区机会:**
  - Multiple past-producing vein systems remain open along strike & down dip near mine workings. / 在矿井工作区附近，沿走向和下倾方向仍有多个过去开采过的矿脉系统。
  - Known vein targets remain under-explored. / 已知的矿脉靶区仍未被充分勘探。
  - Periodicity of vein systems and stratigraphic repetition suggest high potential for blind stacked and parallel veins. / 矿脉系统的周期性和地层的重复性表明，出现隐藏在地下的垂直堆叠且平行矿脉的潜力很大。



**Past Production from Cassiar South High-Grade Veins<sup>1</sup>**  
**Cassiar South高品位矿脉过去的产量<sup>1</sup>**

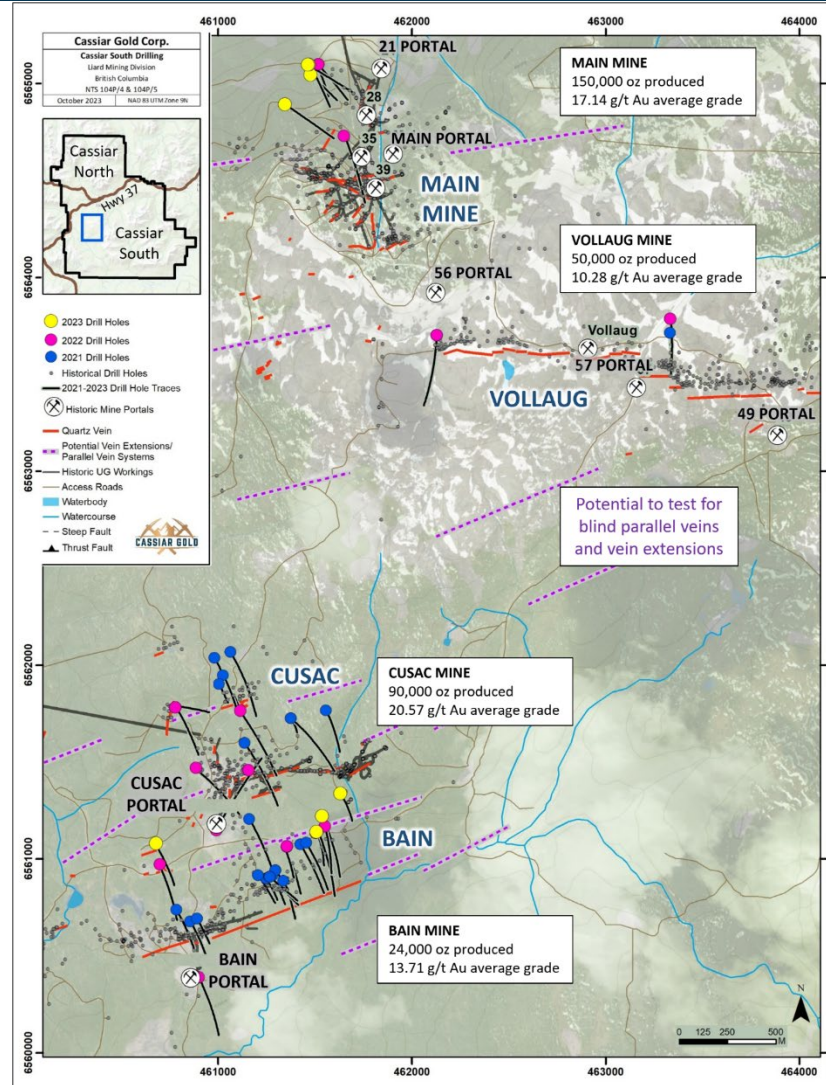
Veins / 矿脉	Year Mined 开采年份	Tonnes (approx.) 吨 (大致)	Ave. Grade Gold g/t 平均品位 黄金 克/吨	Oz Gold 盎司黄金
Jennie-Maura-Alison-Bear (Main)	1979-1988	272,000	17.14	150,000
Eileen-Michelle-Lily (Cusac)	1986-1997	136,000	20.57	90,000
West Bain (Bain)	1993-1995	54,500	13.71	24,000
Vollaug (Vollaug)	1980-1997	154,000	10.28	50,000
Bear (Main)	1998	-	-	1,000
Rory (Main)	2006-2007	5,900	3.43	651
<b>Total / 共计</b>				<b>315,651</b>

<sup>1</sup>Zelligan, Moors, Jolette, April 28, 2022. National Instrument 43-101 Technical Report on the Cassiar Gold Property, prepared for Cassiar Gold Corp, and references therein / Zelligan, Moors, Jolette, 2022年4月28日。为Cassiar Gold Corp.编写的关于Cassiar Gold黄金项目区的NI43-101技术报告，及其参考文献。

# Cassiar South: Drill Highlights / Cassiar South: 钻探亮点



- 18,000 m of drilling 2021-2023 / 2021年-2023年的18,000米钻探
  - 3,200 m in 2023 / 2023年钻探了3200米
- Cassiar Gold drilling identified: / Cassiar Gold钻探确定了:
  - Extensions of known mineralization near existing infrastructure / 现有基础设施附近已知矿化区域的延伸
  - Interpreted offset vein segment of past producing Bain vein system / 对过去生产的Bain矿脉系统的解释为偏移矿脉段
  - Gold-bearing quartz veins adjacent to known vein systems / 邻近已知矿脉系统的含金石英矿脉
  - Confirmed continuity of high-grade mineralization at the East Bain vein / 确认East Bain矿脉高品位矿化的连续性



Drill hole location map of exploration and expansion holes relative to mine infrastructure. Production figures from past producing mines are from Zelligan, Moors, Jollette 2022. 相对于矿山基础设施的勘探和扩展钻孔位置图。过去生产矿山的产量数据来自Zelligan、Moors和Jollette 2022年的报告。

Target Area 靶区区域	Drill Hole 钻孔	From (m) 从(米)	To (m) 到(米)	Length (m) 长度(米)	Grade (g/t Au) 品位(克/吨黄金)
East Bain Extension 东巴恩延伸段	21EBX-300 <sup>2</sup>	182.8	187.6	4.8	35.10
		incl. / 包括 183.2	183.7	0.5	105.00
		and / 和 184.3	184.7	0.4	270.00
	21EBX-301 <sup>2</sup>	143.8	150.1	6.3	12.64
		incl. / 包括 145.7	148.7	3.0	25.70
		incl. / 包括 146.6	147.3	0.7	85.35
22EBX-103 <sup>1</sup>	159.5	174.1	14.6	2.21	
	incl. / 包括 160.2	168.7	8.5	3.22	
	incl. / 包括 164.7	168.7	4.0	5.05	
	361.9	364.1	2.2	32.95	
	incl. / 包括 362.3	362.8	0.6	123.50	
Main Mine	23MM-004 <sup>1</sup>	139.2	376.8	237.6	0.69
		incl. / 包括 285.9	294.2	8.3	2.39
		and / 和 336.5	350.7	14.2	1.64
		and / 和 356.2	368.8	12.6	1.61

<sup>1</sup>Drill core lengths are reported here. True widths for these intervals have not been established / 此处报告的是钻芯长度，真实宽度尚未确定。

<sup>2</sup>Drill core lengths are reported here. Intercepts for the main Bain vein are 80-95% of true width / 此处报告的是钻芯长度。Bain主矿脉的截距为实际宽度的80-95%

Find all reported Cassiar Gold Program Results from Cassiar South here / 查找所有Cassiar Gold报告的Cassiar South的钻探结果

# Cassiar North: Taurus Deposit Open for Expansion

## Cassiar North: Taurus矿床有扩展潜力

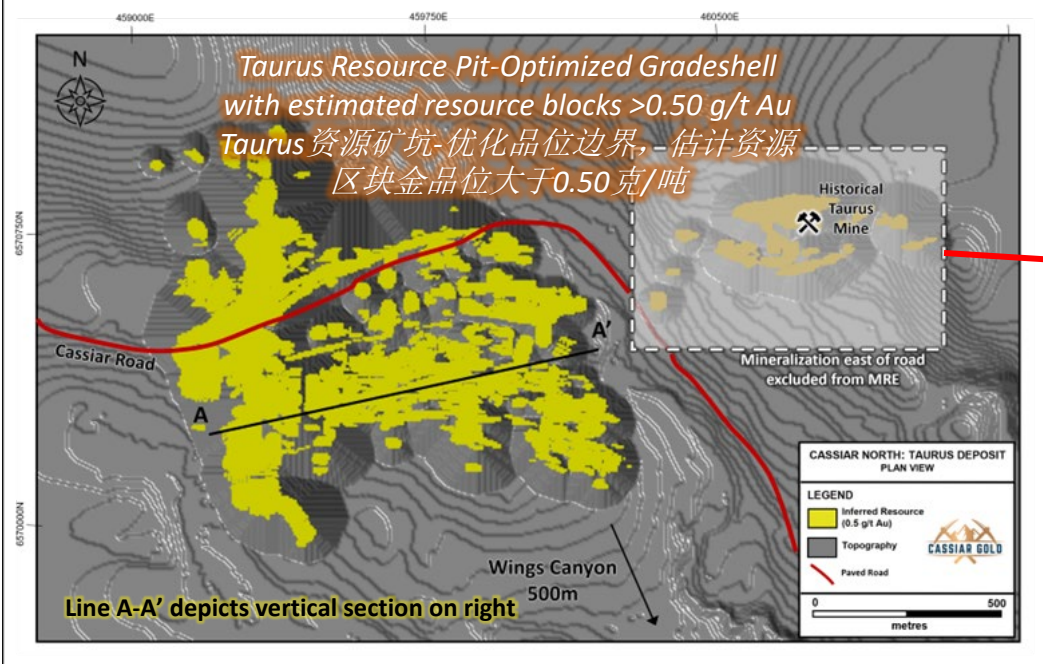


2022 NI 43-101 Taurus Inferred Mineral Resources / 2022 NI 43-101 Taurus推断矿产

资源量

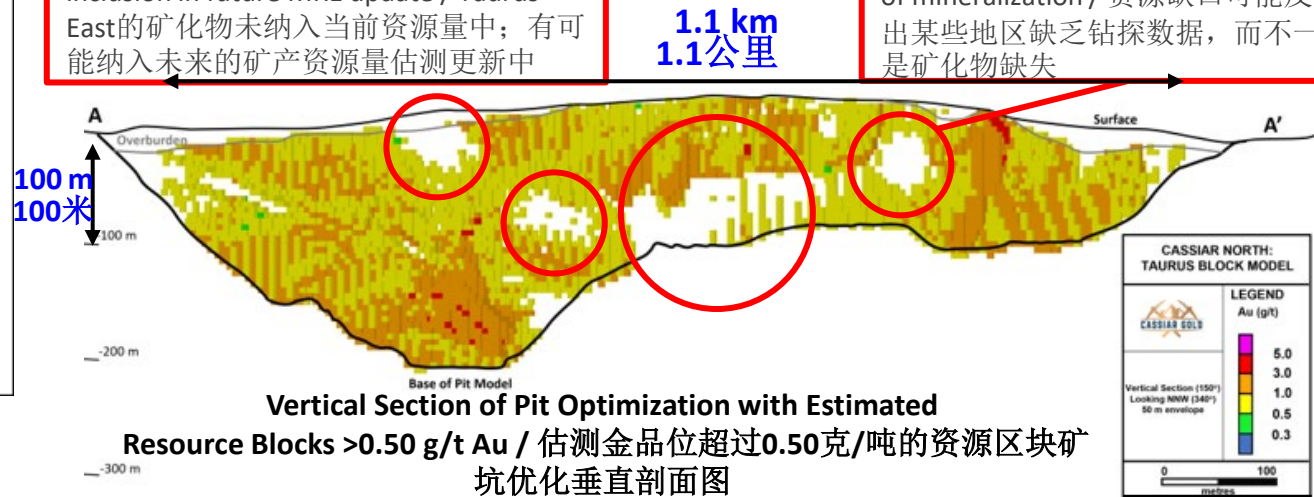
Resource Category / 资源类别	Cut-off Au g/t / 边界金品位克/吨	Tonnes / 吨	Au g/t / 黄金克/吨	Au oz / 黄金盎司
Inferred / 推断	0.40	44,600,000	1.03	1,480,000
<b>Inferred / 推断</b>	<b>0.50</b>	<b>37,900,000</b>	<b>1.14</b>	<b>1,390,000</b>
Inferred / 推断	0.60	32,000,000	1.24	1,280,000
Inferred / 推断	0.70	27,000,000	1.36	1,180,000

- 2022 NI43-101 Compliant Inferred Mineral Resource Estimate of 1.4 Moz @ 1.14 g/t Au using 0.5 g/t cut-off grade.<sup>1</sup> / 2022年NI 43-101推断矿产资源量估测为140万吨，金品位1.14克/吨，采用0.5克/吨的边界品位计算。<sup>1</sup>
- 90% of ounces occur within 150 m from surface, on average 10 m overburden. / 90%的黄金资源位于距地表150米以内，表层岩石覆盖平均为10米。
- Open-pittable, pit constrained resource with mineralization to 270 m vertical depth / 可露天开采、受矿坑限制的资源，矿化垂直深度达270米
- Mineralization is largely constrained by drilling with **high potential for resource expansion** laterally, at depth and within the resource open pit shell. / 矿化在很大程度上受到钻探的限制，在横向、纵深和露天矿资源外壳内的资源扩展潜力很大
- Taurus East past production: 35,000oz @ 3.8 g/t Au<sup>2</sup> recovered grade from 1981-8 / Taurus East过去的产量：1981年期间采收的黄金为35,000盎司，金品位为3.8克/吨



Mineralization at Taurus East is not included in current resource; potential for inclusion in future MRE update / Taurus East的矿化物未纳入当前资源量中；有可能纳入未来的矿产资源量估测更新中

Gaps in resource can reflect lack of drill data in some areas, not necessarily lack of mineralization / 资源缺口可能反映出某些地区缺乏钻探数据，而不一定是矿化物缺失



Vertical Section of Pit Optimization with Estimated Resource Blocks >0.50 g/t Au / 估测金品位超过0.50克/吨的资源区块矿坑优化垂直剖面图

Assumptions: Metal price used was US\$ 1,800/oz Au (Exchange Rate 0.78\$US:1\$C) with process recoveries of 92%. A C\$15/t OPEX mining cost, C\$11/t process cost, and C\$4.50/t G&A cost were used. The constraining pit optimization uses pit slopes of 45°, dilution of 5% and mining recovery of 98%. Strip Ratio is calculated at 4.36:1. / 假设：金属价格为黄金1800美元/盎司（汇率为1加元兑换0.78美元），加工回收率为92%。采用15加元/吨的OPEX采矿成本、11加元/吨的加工成本和4.50加元/吨的一般和行政成本。矿坑内优化采用的矿坑坡度为45°，稀释率为5%，采矿回收率为98%。计算得出的剥采比为4.36:1。

<sup>1</sup> Zelligan, Moors, Jollette April 28, 2022. National Instrument 43-101 Technical Report on the Cassiar Gold Property, prepared for Cassiar Gold Corp. / Zelligan, Moors, Jollette, 2022年4月28日。为Cassiar Gold Corp.编写的关于Cassiar Gold黄金项目区的NI43-101技术报告。  
<sup>2</sup> Taurus MINFILE Production Detail Report, file number 104P 012, BC Geological Survey / Taurus在卑诗省登记在册的产量详情报告，档案编号104P 012，来自卑诗省地质调查局。

# Taurus Deposit: Mineralization Styles / Taurus矿床: 矿化类型



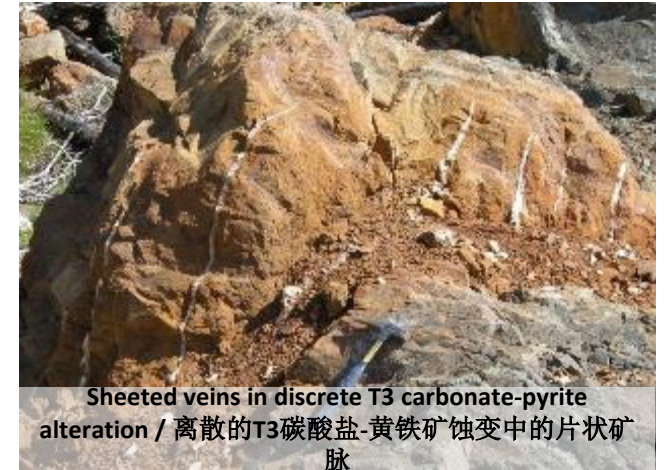
- Mineralization Type<sup>1</sup>:** Basalt-hosted, low-sulfide gold-bearing veins and well-defined alteration envelopes of quartz, sericite-iron carbonate and pyrite. / 矿化类型: 玄武岩承载的低硫化物含金矿脉, 以及由石英、绢云母-碳酸铁和黄铁矿组成的界限分明的蚀变包层。
- Vein density, alteration intensity and shear zone distribution aid in defining and modeling higher grade corridors of mineralization. / 矿脉密度、蚀变强度和剪切带分布有助于确定和模拟高品位矿化走廊。



Pyritohedrons near extension vein (T4), 延伸矿脉 (T4) 附近的黄铁矿晶体



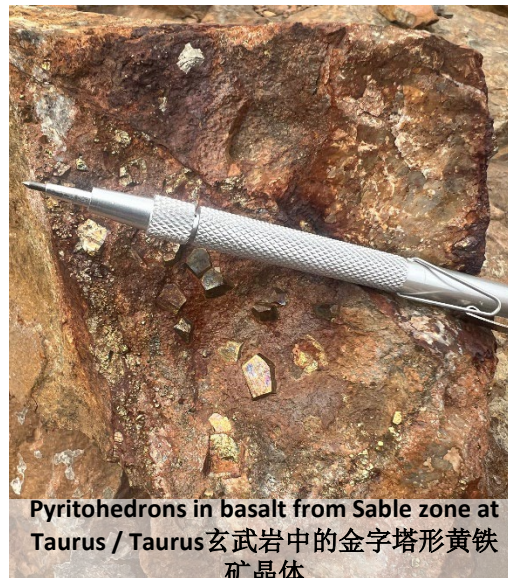
Free gold in extension veins, drill hole 22TA-180 / 延伸矿脉中的游离金, 钻孔22TA-180



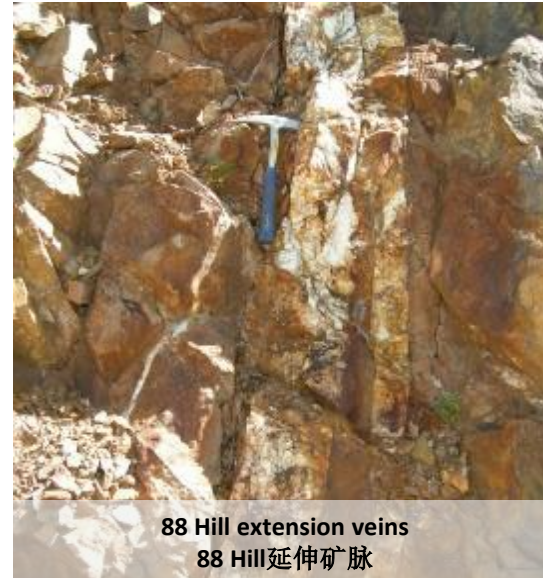
Sheeted veins in discrete T3 carbonate-pyrite alteration / 离散的T3碳酸盐-黄铁矿蚀变中的片状矿脉

## Two Mineralization styles: / 两种矿化类型:

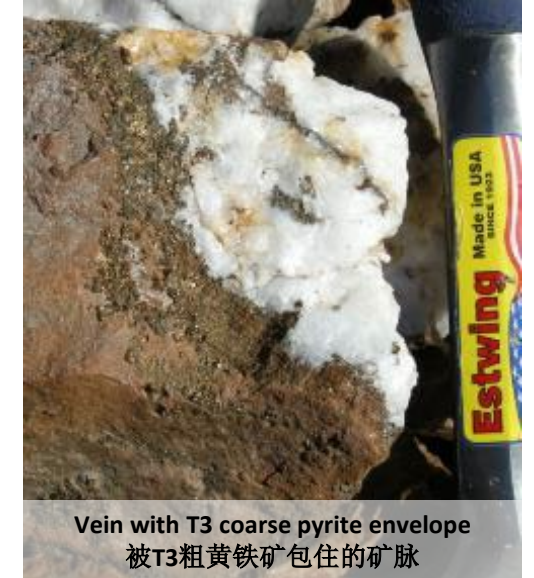
- East-Northeast trending, steeply dipping sets of sheeted quartz extension veins associated with steep, West-Northwest trending shear zones. / 东-东北走向、陡峭倾斜的片状石英延伸矿脉群与陡峭的西-西北走向剪切带有关。
- Broad zones of disseminated pyrite-mineralization in carbonate altered mafic volcanic rocks surrounding structures, especially near Taurus West Fault. / 在构造周围的碳酸盐蚀变黑云母火山岩中, 特别是在Taurus West断层附近, 有广泛分布的黄铁矿矿化带。



Pyritohedrons in basalt from Sable zone at Taurus / Taurus玄武岩中的金字塔形黄铁矿晶体



88 Hill extension veins 88 Hill延伸矿脉



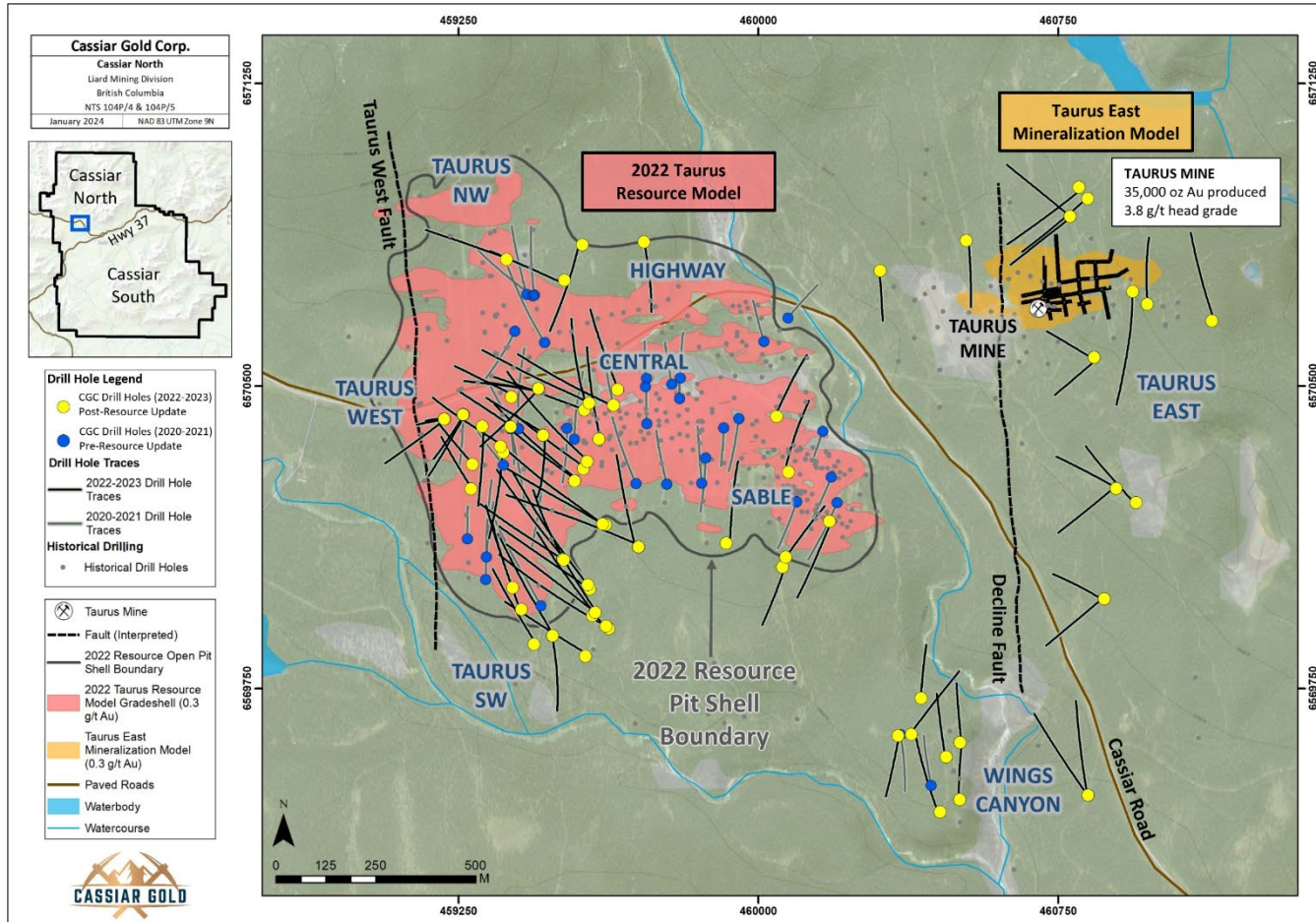
Vein with T3 coarse pyrite envelope 被T3粗黄铁矿包住的矿脉

# Taurus Deposit: 2022 - 2023 Drill Highlights

## Taurus矿床：2022-2023钻探亮点



### Cassiar Gold Drill Hole Locations / Cassiar Gold钻孔位置



Drill hole location map of exploration and expansion holes relative to the Taurus deposit. Surface projection of the 2022 resource estimate >0.3 g/t Au grade shell is shown for reference (from Zelligan, Moors, Jolette 2022). / 与Taurus矿床有关的勘探和扩展钻孔位置图。图中显示的是2022年资源量估测中金品位超过0.3克/吨的矿坑外壳的地表投影，以供参考（摘自Zelligan、Moors、Jolette 2022的报告）。

Target Area 靶区区域	Drill Hole 钻孔	From (m) 从 (米)	To (m) 到 (米)	Length* (m) 长度* (米)	Grade (g/t Au) 品位 (克/吨黄金)	
Taurus East	22TA-169	4.50	11.10	6.60	22.44	
		<i>incl. / 包括</i>	10.30	11.10	0.80	174.5
Taurus West	22TA-176	10.70	108.70	98.00	1.28	
		<i>incl. / 包括</i>	41.70	45.80	4.10	12.02
		<i>with / 与</i>	43.80	45.10	1.30	25.87
	22TA-180	177.50	249.10	71.60	1.54	
		<i>incl. / 包括</i>	222.00	245.50	23.50	3.68
	<i>incl. / 包括</i>	222.00	223.00	1.00	37.4	
22TA-182	194.70	253.50	58.80	1.34		
	<i>incl. / 包括</i>	240.20	253.00	12.80	2.41	
	23TA-187	311.10	334.65	23.55	4.19	
<i>incl. / 包括</i>	317.25	325.05	7.80	6.22		
23TA-206	196.10	374.35	178.25	0.59		
	<i>incl. / 包括</i>	271.80	291.35	19.55	2.23	
	Taurus Southwest	22TA-161	8.20	180.10	171.88	0.66
22TA-172	28.00	167.40	139.35	0.61		
	<i>incl. / 包括</i>	48.70	64.10	15.35	1.31	
	23TA-204	13.00	165.10	152.10	0.58	

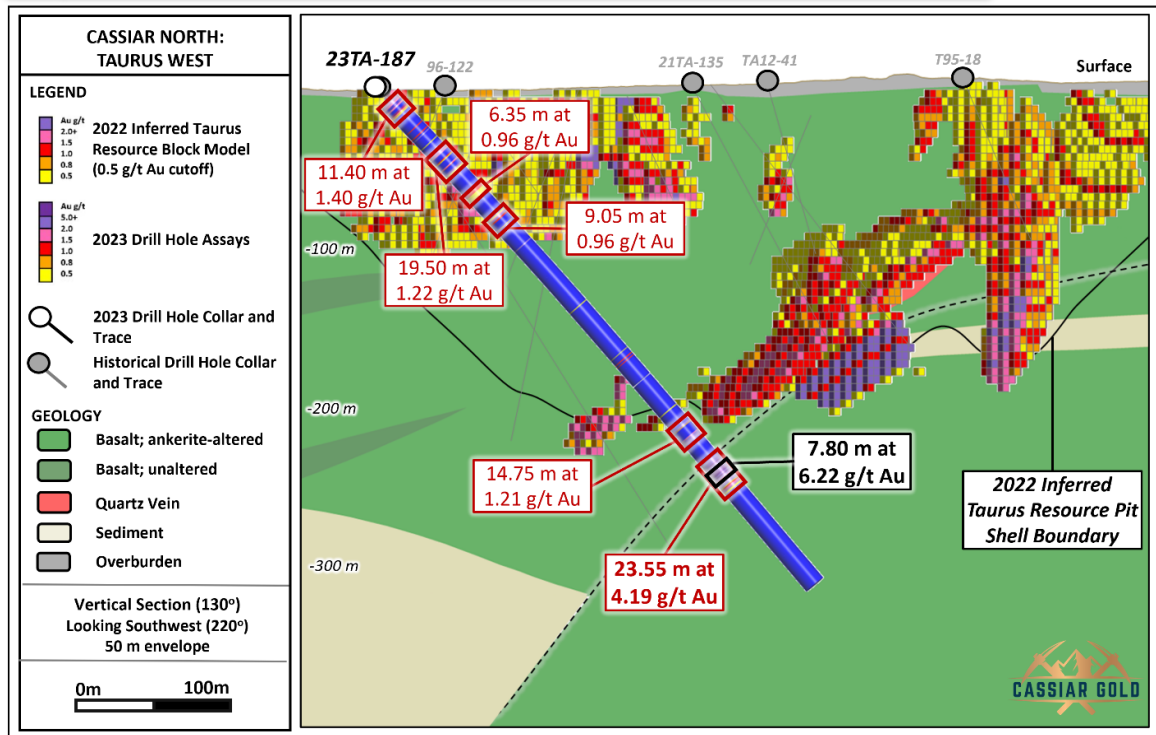
\* Drill core lengths are reported here. True widths for these intervals have not been established  
此处报告的是钻探岩芯长度，真实宽度尚未确定。

# Taurus West & Southwest: Expanding Mineralization

## Taurus West & Southwest: 矿化范围扩大

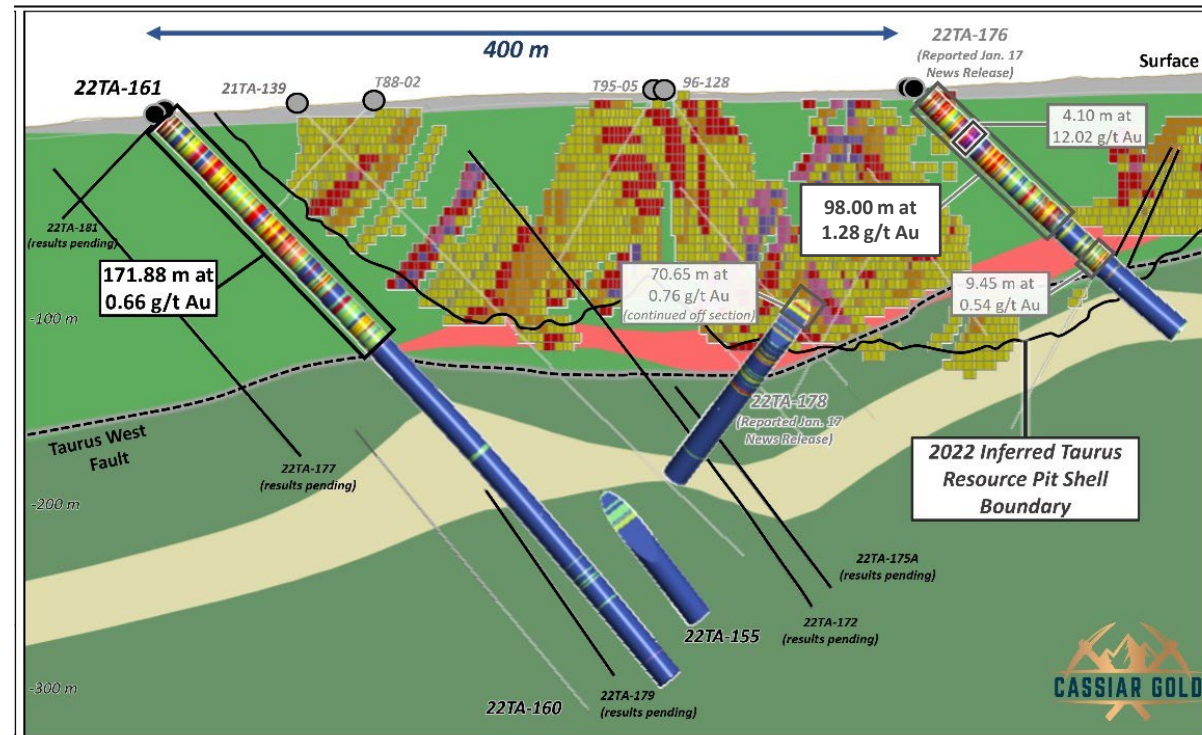


**Extension of Higher Grade Trend below Pit Constrained Resource Intersecting 23.6 m of 4.19 g/t Au<sup>1</sup> / 对延伸到矿坑内资源下方更高品位的趋势带进行钻探，得到金品位4.19克/吨的23.6米矿段<sup>1</sup>**



Vertical section showing 22TA-187 at the Taurus Deposit, looking to the southwest. Assay results in red and higher-grade nested intervals in black are reported in this news release. Section width +/- 25m. / 显示Taurus矿床向西南方向看去22TA-187的垂直剖面图。红色为测定结果，黑色为更高品位的嵌套区间。剖面宽度+/- 25米。

**Infill Drilling Intersecting 98 m of 1.28 g/t<sup>2</sup> within Pit Shell & Step Out 171.9 m of 0.66 g/t Au<sup>2</sup> beyond Pit Constrained Resource / 加密钻探在矿坑外壳内发现金品位1.28克/吨的98米矿段，并在矿坑内资源之外的探边钻探中得到金品位0.66克/吨的171.9米矿段**



Vertical section showing 22TA-161 at the Taurus Deposit, looking southwest with the 2022 Taurus Resource Block Model for reference. / 显示Taurus矿床向西南方向看去22TA-161的垂直剖面图，以2022年Taurus资源区块模型作为参考。

<sup>1</sup> Cassiar Gold Expands Gold Mineralization at the Taurus Deposit, Drilling Results Include 23.6 m of 4.19 g/t in the Taurus West Area / Cassiar Gold扩大了Taurus矿床金矿化范围，钻探结果包括在Taurus West得到的金品位4.19克/吨的23.6米矿段

<sup>2</sup> Cassiar Gold Expands Mineralization at Surface Intersecting 171.9 m of 0.66 g/t Au at the Taurus Gold Deposit / Cassiar Gold扩大Taurus金矿床地表矿化范围，钻探结果显示171.9米范围内金品位为0.66克/吨

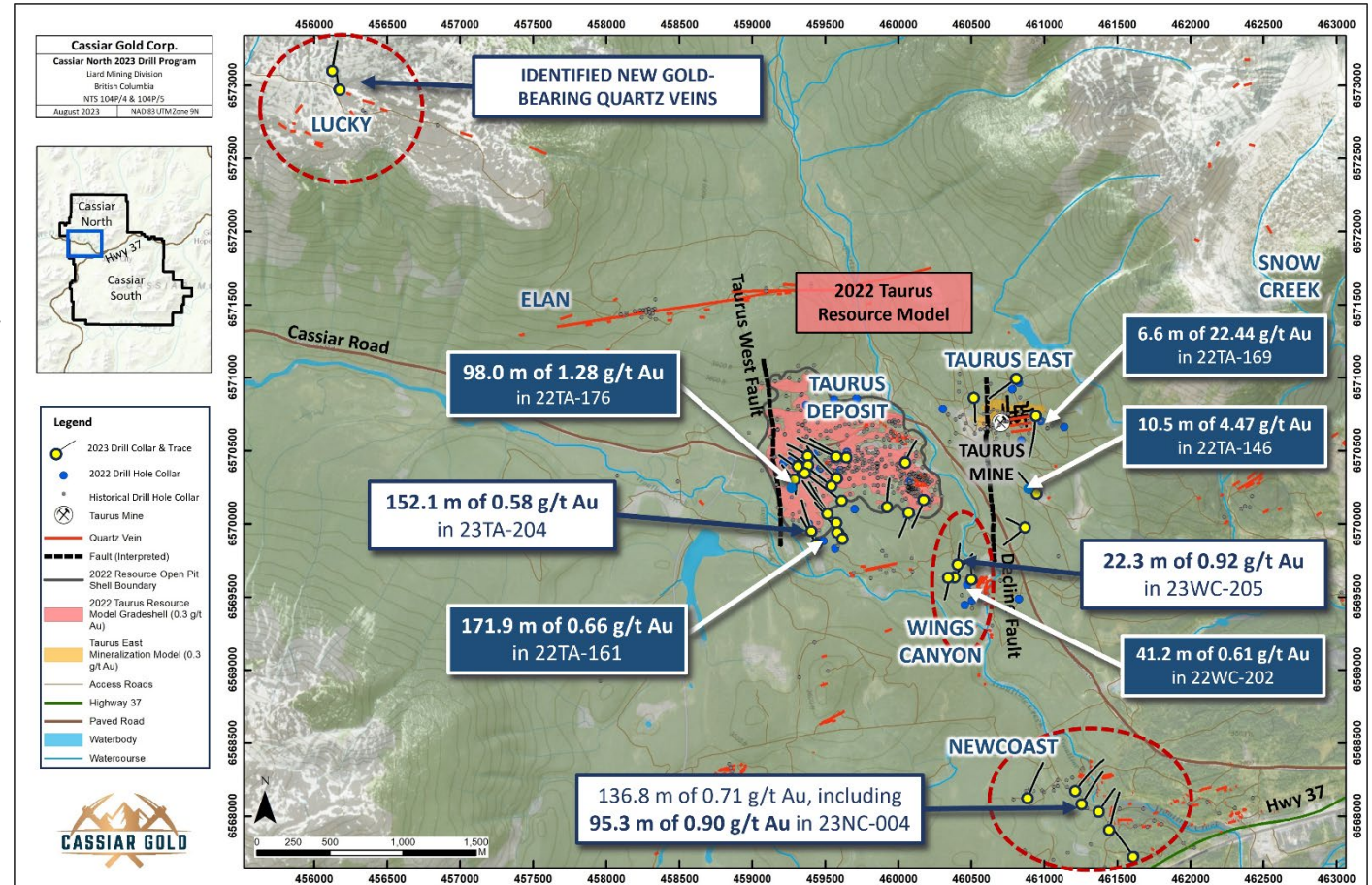


# Cassiar North: 2022 + 2023 Drill Program Details

## Cassiar North: 2022年和2023年钻探计划详情



- 23,167 m Taurus Deposit drilling completed; / 完成对Taurus矿床的23,167米钻探;
  - 9,200 m in 2023 / 2023年钻探了9200米
- ~80% focused on 50-100 m step-out holes around the deposit to; / 近80%的钻探集中在矿床周边50-100米的探边钻孔, 以便:
  - Test for extensions of key mineralized trends and potentially expand the resource laterally. / 测试关键矿化趋势带的延伸, 并可能横向扩大资源量。
- ~20% focused on infill, confirmation, and deeper drilling; / 大约20%的钻探侧重于加密、确认和更深层的钻探:
  - Infill drilling will fill in gaps between widely spaced historical holes. / 加密钻探将填补历史上间距较大的钻孔之间的空白。
  - Deeper drilling will focus on expanding mineralization at depth. / 更深层的钻探将侧重于扩大矿化深度。
- 5,212 m drilling at high-priority outlying targets such as Newcastle, Lucky, and step-out holes at Wings Canyon. / 在新castle、Lucky等几个高度优先的外围靶区进行了5212米的钻探, 并在Wings Canyon进行了探边钻探。



Cassiar North plan map of locations of 2022-2023 drilling at outlying target areas (red dashed circles) relative to the Taurus deposit. Surface projection of the 2022 resource estimate >0.3 g/t Au grade shell is shown for reference (from Zelligan, Moors, Jolette 2022). / Cassiar North 2023年勘探和扩大范围钻探位置图, 与Taurus矿床相对的外围靶区区域(红色虚线圆圈)。图中显示的是2022年资源量估算中金品位超过0.3克/吨的矿床外围地表投影, 以供参考(摘自Zelligan, Moors, Jolette 2022年资料)。

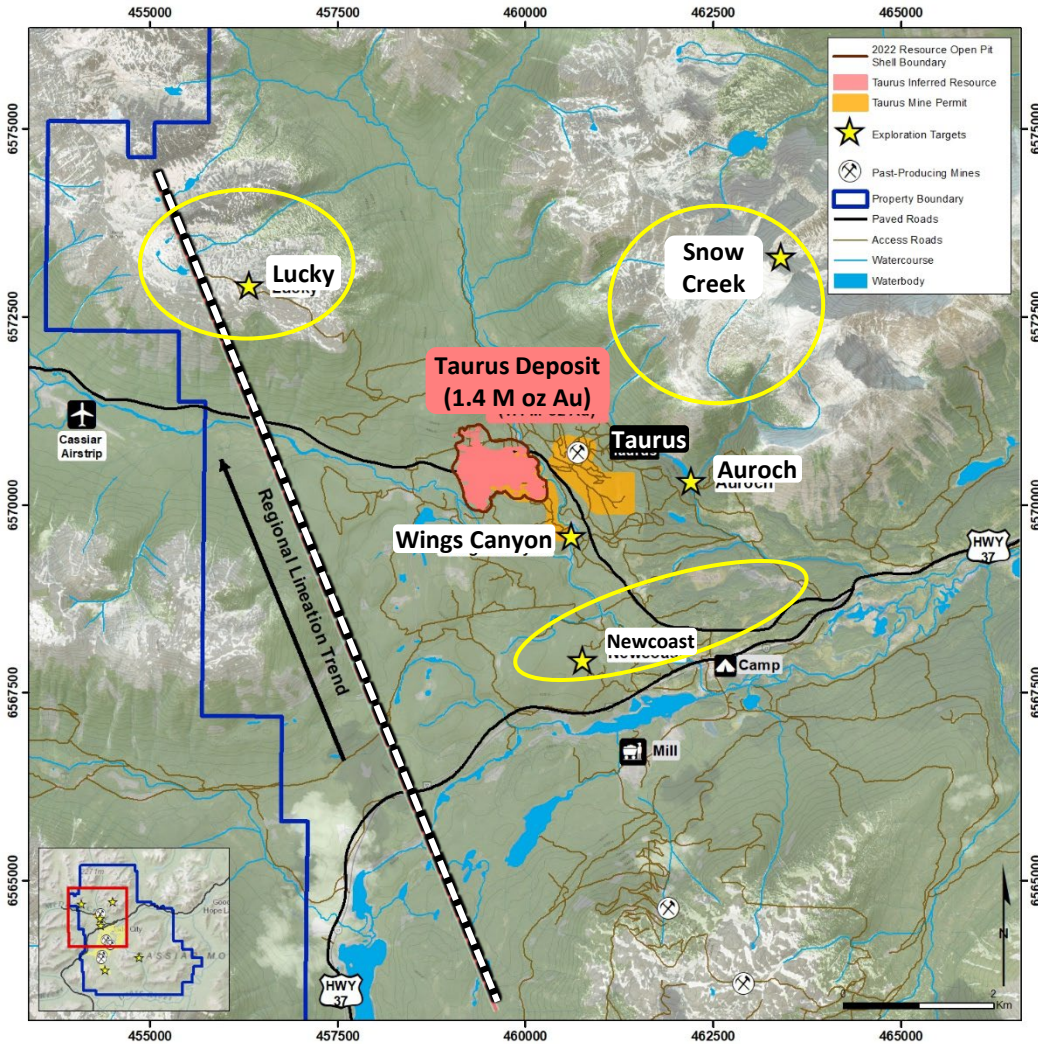
# Priority Regional Targets: Underexplored & Highly Prospective

## 优先区域靶区：未充分勘探但极具前景



### Location of Regional Targets at Cassiar North

Cassiar North 区域靶区的位置



- Newcoast** - ~3 km long east-west corridor with shallow and outcropping quartz veining, pyrite, and silica, sericite, and iron carbonate alteration; similar to Taurus. Very limited historical drilling with samples exceeding 5 g/t<sup>1</sup>. / 长约3公里的東西向礦化走廊，具有淺層和露頭石英脈、黃鐵礦、矽石、絹雲母和碳酸鐵蝕變；與Taurus類似。歷史鑽探非常有限，樣本中金品位超過5克/噸。<sup>1</sup>
- Lucky** - Large multi-element soil geochemical anomaly defined over 1 km area 4 km west of Taurus Deposit. Numerous quartz veins exposed within an area of strong iron-carbonate altered mafic volcanics and listwanite. **2019 surface rock samples assayed 313.0 g/t Au and 151.5 g/t Au.**<sup>2</sup> / 在Taurus礦床以西4公里處的1公里區域內發現了大量多元素土壤地球化學異常。大量石英礦脈暴露在鐵碳酸鹽強烈蝕變的黑雲母火山岩和石英菱鎂岩區域內。**2019年地表岩石樣本的金測定結果分別為313.0克/噸和151.5克/噸。**<sup>2</sup>
- Snow Creek** - Quartz veining, pyrite, and varying amounts of silica, sericite, and iron carbonate similar to the Taurus Deposit. / 石英脈、黃鐵礦以及不同數量的二氧化矽、絹雲母和碳酸鐵，與Taurus礦床類似。

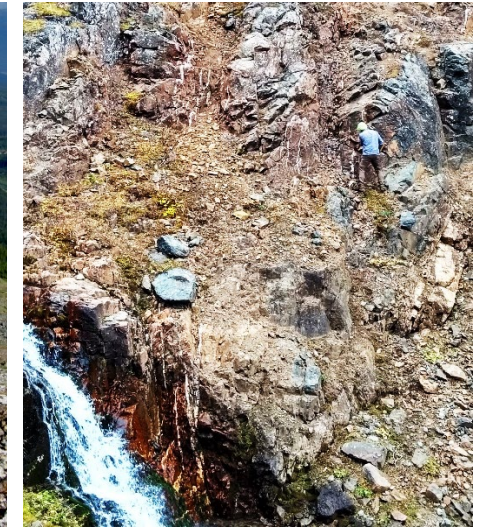
Newcoast



Lucky



Snow Creek

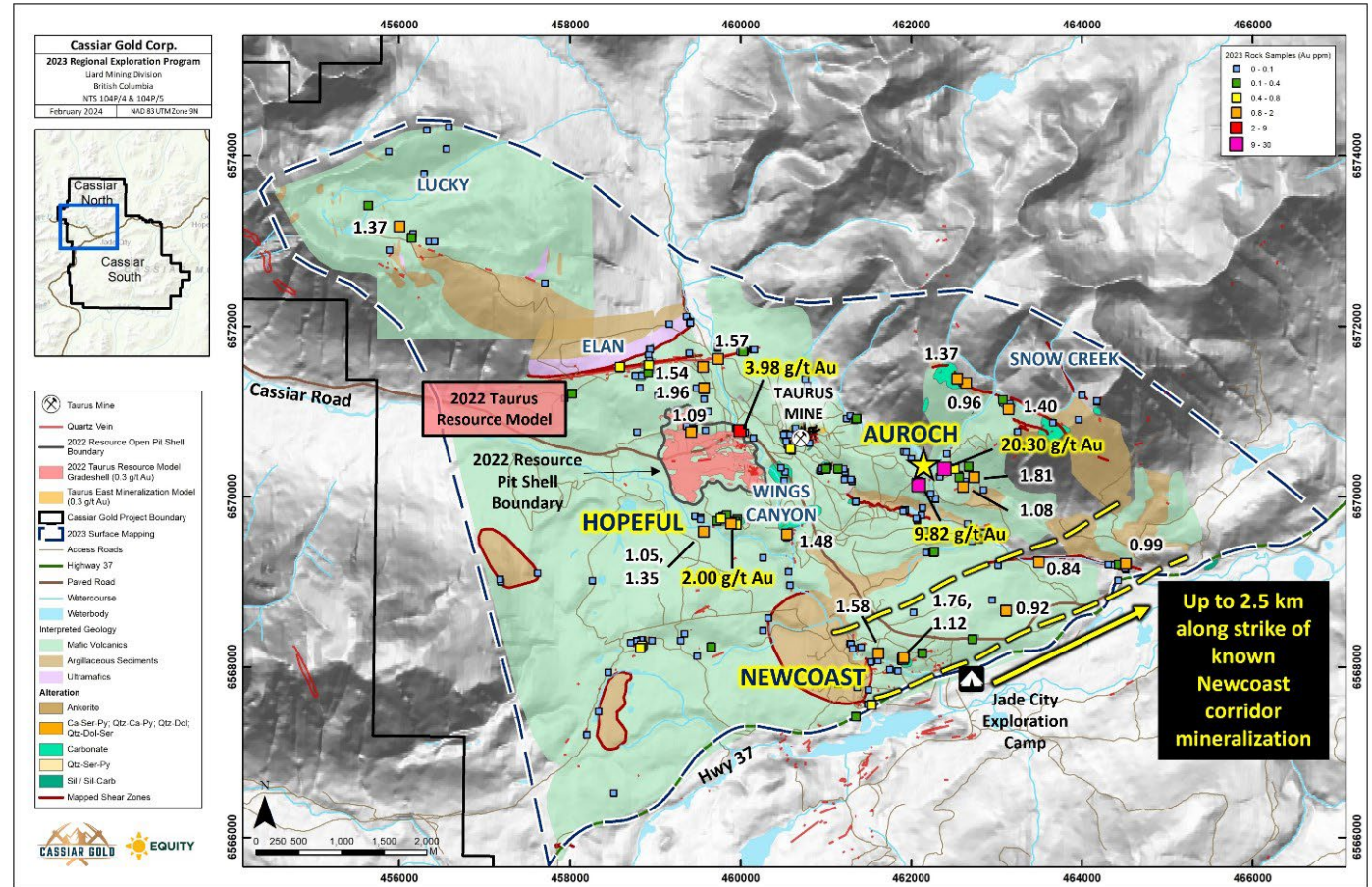


# 2023 Surface Sampling & Mapping Results

## 2023年地表取样和测绘结果



- **Surface rock sample results: / 地表岩石样本结果:**
  - **Discovered new gold occurrence / 发现新的黄金矿点**
    - **Auroch mineralized showing, / Auroch矿化表象区**
    - Assays returned: **9.82 g/t Au grab sample with visible gold and 20.30 g/t Au in float. / 测定结果显示: 抓取样本中金品位为9.82克/吨, 有可见金, 以及破碎的岩石颗粒中金品位高达20.30克/吨。**
  - **Expanded surface mineralization at multiple regional prospects, including: / 扩大了多个地区前景区的地表矿化范围, 包括:**
    - **Newcoast target corridor: up to 2.5 km to the east along strike, and / Newcoast靶区走廊: 沿走向向东长达2.5公里, 以及**
    - **Hopeful prospect: up to 250 m to the southwest. / Hopeful前景区: 西南方向长达250米**
- **Geological Mapping: / 地质测绘:**
  - Identified/mapped a series of major northwest trending shear zones; / 确定/绘制了一系列主要的西北走向剪切带;
  - potential mineralization-controlling features. / 潜在的矿化控制特征



2023 geological map with grab sample results, relative to the Taurus Inferred Mineral Resource. 与Taurus推断矿产资源量相关的2023年地质图及抓取样本结果。

Cassiar Gold Discovers New Gold Occurrence, Expands Surface Mineralization, and Identifies Multiple Gold-In-Soil Anomalies at Cassiar North / Cassiar Gold在Cassiar North发现新的金矿化点, 扩大了地表矿化范围, 并确定了多个土壤中的金异常点

# 2023 Soil & Induced Polarization Survey Findings

## 2023年土壤与激发极化勘测发现

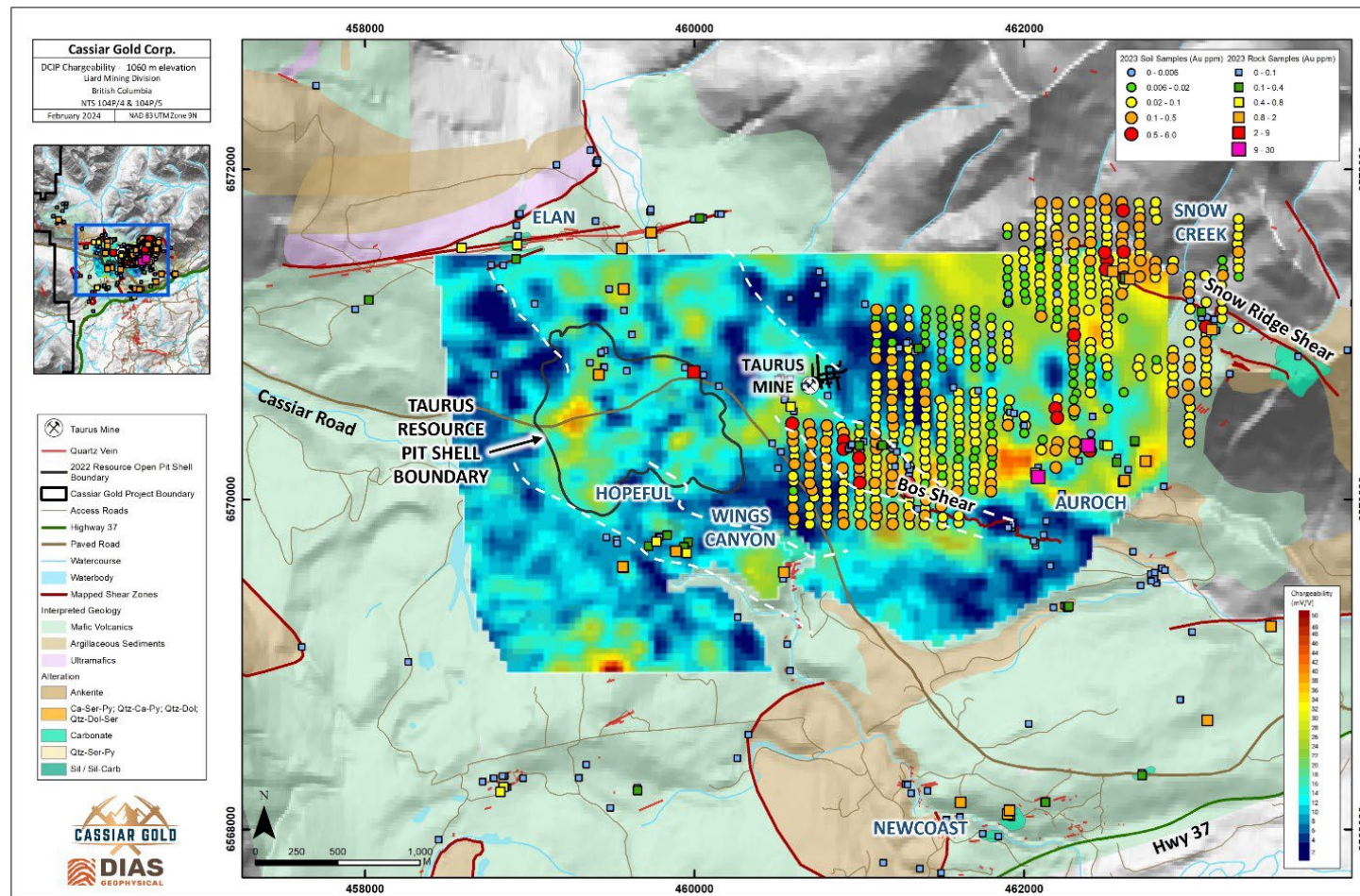


### Soil survey results: / 土壤调查结果:

- Identified **multiple gold-in-soil anomalies** / 发现多个土壤中含金异常点
- coincident with major mapped structural trends and limited surface rock sample data, and / 与绘制的主要构造趋势和有限的地表岩石样本数据相吻合, 以及
- remain open** beyond the extent of the survey sample grid. / 在勘查样本网格的范围之外, 成矿作用仍保持开放

### DCIP Survey / DCIP勘测

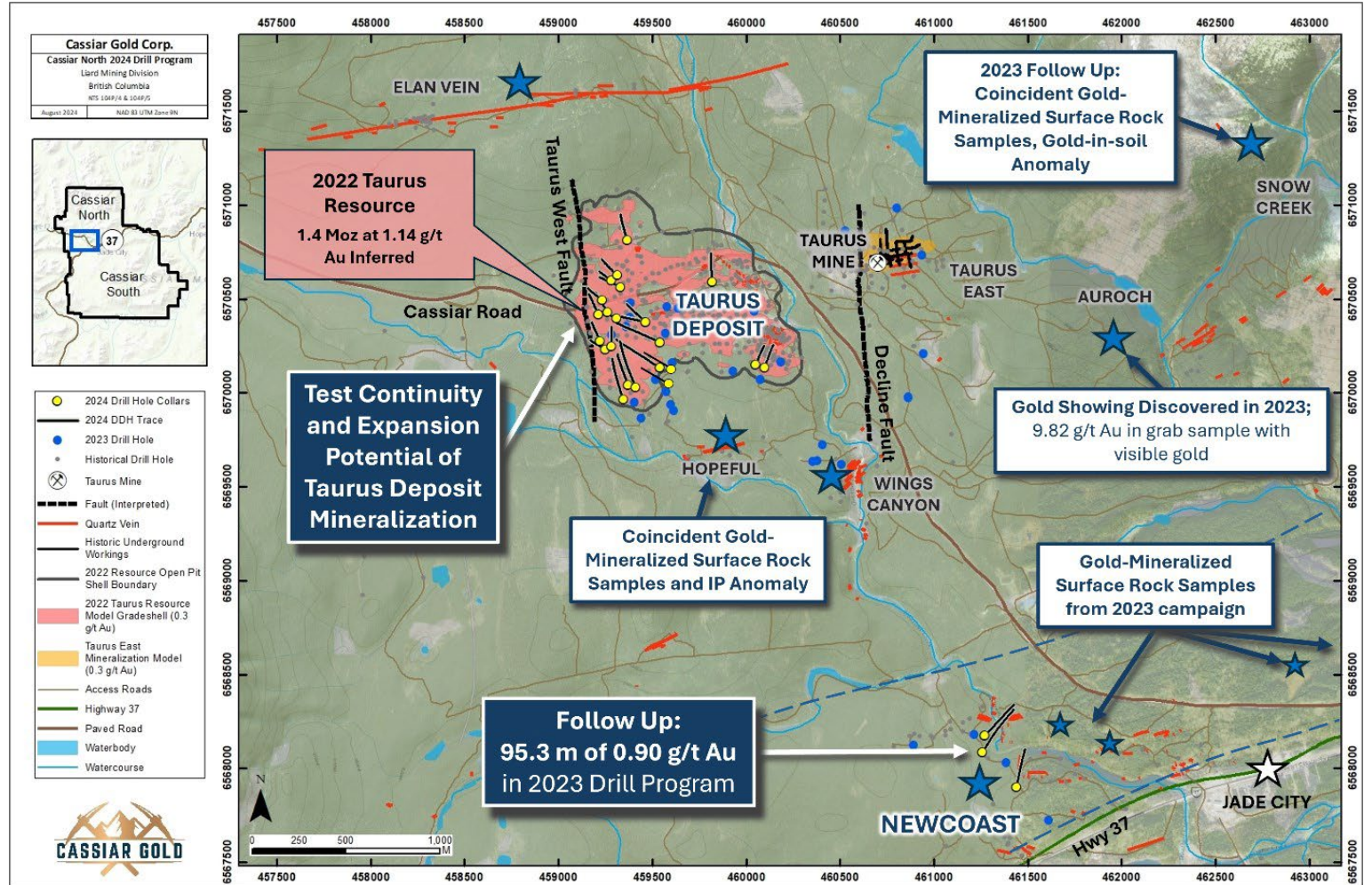
- Lineaments suggest a series of NW and NE trending features, / 地形显示出一系列西北和东北走向的特征
  - Occur concordant to the orientation of mineralization-controlling structures elsewhere in the project area. / 与项目区域其他地方的矿化控制结构方向一致。
  - Coincide with areas of alteration and vein development that have the potential to host or control additional areas of mineralization. / 与蚀变和矿脉发育区域相吻合, 这些区域有可能承载或控制更多的矿化区域。



# 2024 Drill Program / 2024年钻探计划



- Drill campaign expanded beyond initial 5,000 m Phase 1 scope / 钻探活动扩大至最初的5000米第一阶段范围之外**
  - 7,168 m of core from 30 drill holes / 来自30个钻孔的7168米钻芯
  - Taurus deposit: / Taurus矿床:**
    - 5,923 m of drilling in 27 drill holes / 27个钻孔累计钻探5923米
    - Step out drilling (~20%) and infill holes at untested areas between resource blocks (~80%) / 在资源区块之间 (约80%) 未经测试的地区进行探边钻探 (约20%) 和加密钻探
  - Newcoast regional target: / Newcoast区域靶区:**
    - 1,245 m of drilling in 3 drill holes / 三个钻孔1245米的钻探
    - Expansion drill holes as follow up to 2023 program results / 扩展钻孔是对2023年钻探结果的后续跟进



Cassiar North 2024 drill campaign drill hole locations plan map of infill and expansion drilling at the Taurus deposit, as well as exploration drill holes at the Newcoast regional target. Surface projection of the 2022 resource estimate >0.3 g/t Au grade shell is shown for reference (from Zelligan, Moors, Jolette 2022) / Cassiar North 2024年钻探活动, 钻孔位置计划图, 涵盖了Taurus矿床的加密和扩展钻探, 以及Newcoast区域靶区的勘探钻孔。2022年估测资源区域的地下矿床或地质特征的投影, 金品位超过0.3克/吨的区域以供参考 (来自Zelligan、Moors、Jolette, 2022年)。

# 2024 Geophysical Surveys & Field Program

## 2024年地球物理勘测和野外实地工作计划



### ■ IP Survey / 激发极化 (IP) 测量

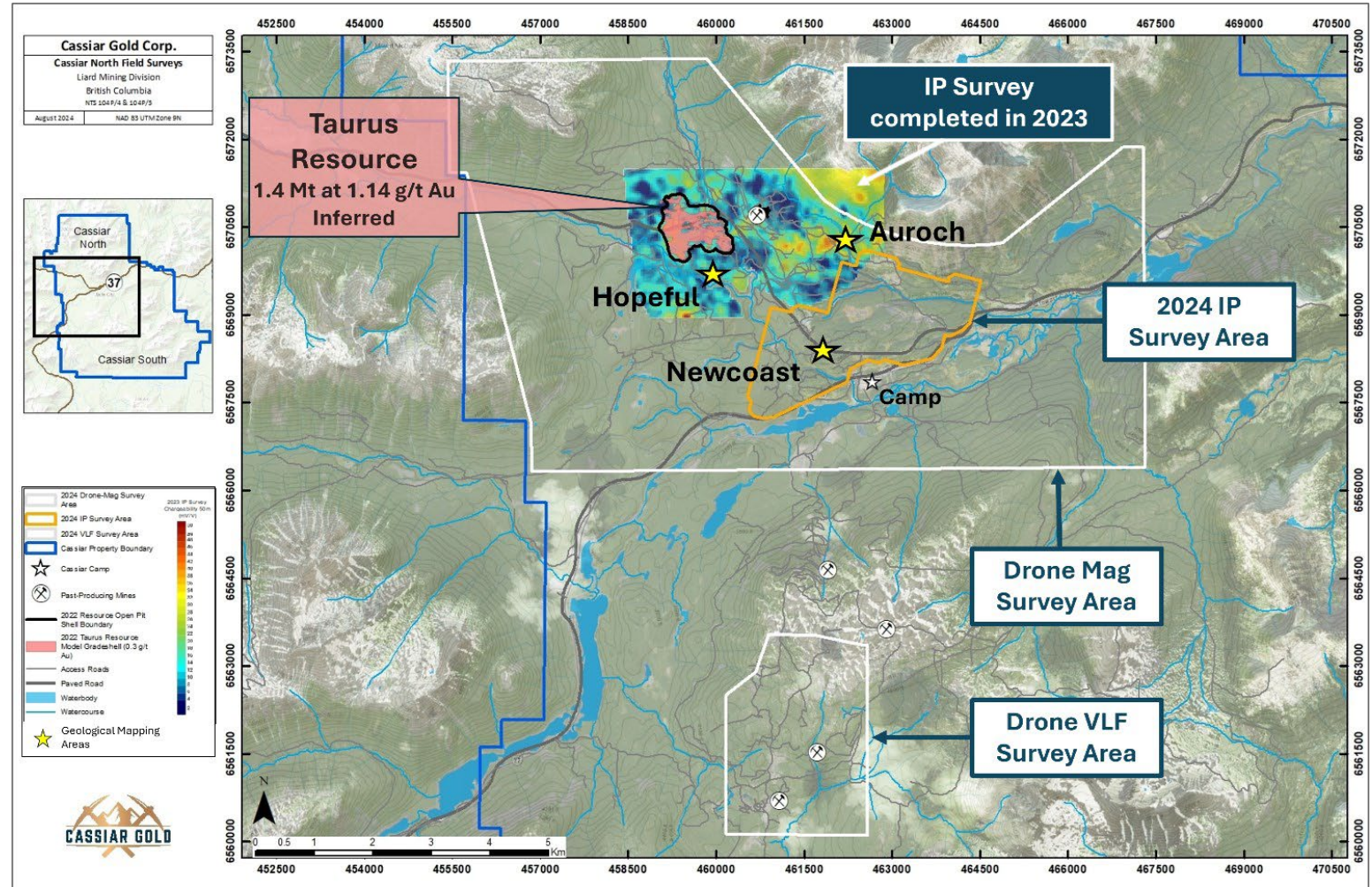
- Data collection phase complete / 数据收集阶段完成
- ~6 km<sup>2</sup> footprint / 覆盖~6平方公里面积
- 175 m line spacing; 75 m station spacing / 线间距175米; 取样间距75米

### ■ Planned Drone-supported Surveys / 规划的无人机航测

- Mag: ~60 km<sup>2</sup> footprint; 50 m line spacing / 磁测: 覆盖~60平方公里面积; 线间距50米
- VLF-EM: ~7.5 km<sup>2</sup> footprint; 50 m line spacing / VLF-EM (极低频电磁勘测): 覆盖~7.5平方公里面积; 线间距50米

### ■ Geological Mapping & Surface Sampling / 地质测绘和地表采样

- Mapping/sampling over known & recently identified gold prospects / 对已知和最近确定的黄金前景区进行地质测绘和采样
- To be complemented by soil sampling in select areas / 将通过在特定区域进行土壤采样作为补充



Map of location and extent of 2024 areas subject to geophysical surveys and field mapping/sampling. Stars indicate areas of focus for geological mapping and sampling. Surface projection of the 2022 resource estimate >0.3 g/t Au grade shell is shown for reference (from Zelligan, Moors, Jolette 2022) / 2024年地球物理勘测和野外测绘/采样工作范围及位置图。星星表示地质测绘和采样的重点区域。2022年资源估计区域的地表投影, 金品位超过0.3克/吨的外围区域供参考 (来自Zelligan、Moors、Jolette 2022年)

# Experienced Leadership Team

## 经验丰富的领导团队

Click [HERE](#) to meet more of the team!  
 点击这里 了解更多团队成员!



**STEPHEN LETWIN**  
**Chairman**  
**董事会主席**



- +30 yrs in extractive resource sector / 在资源采掘领域有30多年的经验
- President & CEO of IAMGOLD (CAD\$2Bn mkt cap) from 2010-2020 / 2010-2020年担任IAMGOLD (市值20亿加元) 总裁兼首席执行官
- Previously Executive VP Gas Transportation & International with Enbridge Inc., President & COO of TransCanada Energy / 曾担任Enbridge Inc.天然气运输与国际部执行副总裁、TransCanada Energy总裁兼首席运营官



**STEVE ROBERTSON**  
**Director**  
**董事**



- +30 yrs experience in exploration and mine operations in British Columbia as a professional geologist / 在卑诗省拥有30多年勘探和矿山运营经验的专业地质学家
- Received 2016 E.A. Scholz Award for Excellence in Mine Development for his role in the development/permitting of Imperial Metals' Red Chris mine / 荣获2016年E.A. Scholz矿山开发卓越奖, 表彰其在Imperial Metals的Red Chris矿开发/审批过程中发挥的关键作用
- Former President and CEO of Sun Metals
- Sun Metals前总裁兼首席执行官



**JAMES MAXWELL**  
**Director**  
**董事**



- +20 yrs experience as professional geologist / 20多年专业地质学家经验
- VP Exploration for First Mining Gold and former Exploration Director of Sabina Gold & Silver Corp / First Mining Gold勘探副总裁, Sabina Gold & Silver Corp.前勘探总监
- Co-Award winner of North-western Ontario Prospectors Association Discovery of the Year award / 安大略省西北部探矿者协会年度发现奖共同获得者



**CHRIS STEWART**  
**Director**  
**董事**



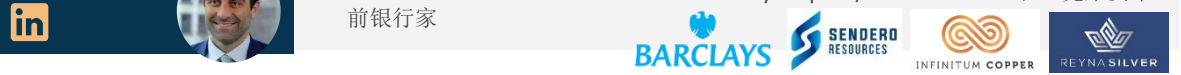
- +30 yrs as a Mining Engineer & Turnaround Specialist / 有30多年经验的采矿工程师和转型改革专家
- Track record for successful new mine advancement and development and optimization of existing mines in Canada and abroad / 在加拿大和国外成功推进新矿山建设、开发和优化现有矿山的成功案例



**MARCO ROQUE**  
**President & CEO**  
**总裁兼首席执行官**



- +17 yrs of international finance experience including banking, capital markets, venture capital and corporate advisory / 拥有超过17年的国际金融经验, 包括银行、资本市场、风险投资和企业咨询
- Co-founder of Reyna Silver & Infinitum Copper; Advisor of Emerging Markets Capital, a Hong Kong Mining Investment firm / Reyna Silver和Infinitum Copper的共同创始人; 香港矿业投资公司Emerging Markets Capital的顾问
- Former banker at Millennium BCP and Barclays Capital / Millennium BCP和巴克莱资本前银行家



**JILL MAXWELL**  
**VP Exploration**  
**勘探副总裁**



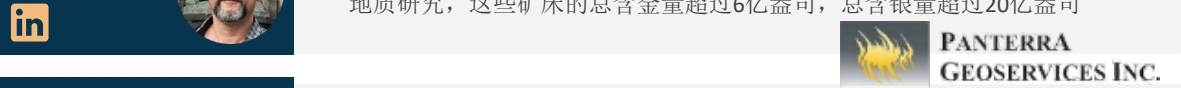
- +13 yrs in the precious metals sector / 在贵金属行业有13年以上的经验
- A wide range of experience in mineral exploration from greenfields programs through to feasibility level studies for orogenic gold and Ni-Cu-PGEs, including at Sabina Gold & Silver Corp.'s Back River Project (now owned by B2Gold) and North American Palladium Ltd.'s Lac des Iles Mine through and following its acquisition by Impala Platinum / 在矿产勘探领域拥有广泛的经验, 从绿地项目到造山金矿和镍铜铂族金属的可行性研究, 包括Sabina Gold & Silver Corp.的Back River项目 (现为B2Gold所有) 和North American Palladium Ltd.的Lac des Iles矿 (在其被Impala Platinum收购前后)。



**DAVE RHYS**  
**Chief Technical Advisor**  
**首席技术顾问**



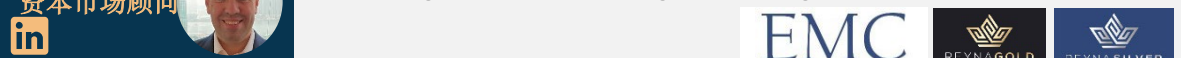
- +28 yrs of experience in the mining industry as a renowned orogenic gold expert and consultant for major mining companies / 作为著名的造山金矿专家和大型矿业公司顾问, 在采矿业拥有28年以上的经验
- Conducted direct, field-based geological studies on deposits collectively containing >600Moz and >2Boz Ag including deposits in the Carlin Trend and the Abitibi Greenstone Belt / 对卡林趋势带和阿比提比绿岩带上的矿床进行了直接的实地地质研究, 这些矿床的总含金量超过6亿盎司, 总含银量超过20亿盎司



**JORGE RAMIRO MONROY**  
**Capital Markets Advisor**  
**资本市场顾问**



- Founder and Managing Director of Emerging Markets Capital, a mining focused investment company based in Hong Kong / Emerging Markets Capital创始人兼董事总经理, 该公司总部设在中国香港, 是一家专注于矿业的投资公司
- Co-Founder and CEO of Reyna Silver / Reyna Silver联合创始人兼首席执行官
- Director of Sierra Madre Gold and Silver / Sierra Madre Gold and Silver董事
- Founding Director of Prime Mining / Prime Mining创始董事



# Committed to Social & Environmental Responsibility

## 致力于履行社会和环境责任



Cassiar Gold acknowledges, respects, and supports the rights of the Kaska Dena First Nations on the lands and communities where we operate. / Cassiar Gold 承认、尊重并支持 Kaska Dena 原住民在我们项目运营所在地和社区的权益。

Since Cassiar Gold has started managing the project in 2019, CGC has continuously engaged with the local community to support initiatives such as the construction of a local hockey rink and team sponsorship, local hires, site clean up/assessments, educational training supports and procurement of core boxes from the Dease River Development Corporation amongst other partnerships. ESG reporting and initiatives are in place to continually monitor and improve our impacts to the surrounding community and environment. / 自 Cassiar Gold 于 2019 年开始管理该项目以来不断与当地社区合作，为当地冰球场的建设和球队赞助、本地招聘、场地清理/评估、教育培训支持以及从 Dease River Development Corporation 采购岩芯箱等活动提供支持。实施环境、社会和公司治理（ESG）报告和倡议，不断监测和改善我们对周边社区和环境的影响。



Organizations that our team members are actively involved with include the Chamber of Mines, Community Futures and Streamkeepers Society. / 我们的团队成员积极参与的组织包括矿业商会、Community Futures 和溪流保护者协会（Streamkeepers Society）。



### Community Engagement / 社区参与

Our company and crew are dedicated to the communities we live in, the communities we work with and the lands we work on. We strive for our personal and professional lives to reflect our values: volunteering our time and resources for several local groups & organizations and maintaining strong community pride. / 我们的公司和员工致力于我们所居住的社区、与我们合作的社区以及我们工作所在的当地。我们努力在个人和职业生活中体现我们的价值观：为多个当地团体和组织自愿贡献我们的时间和资源，并保持强烈的社区自豪感。

### Environment / 环境保护

We pride ourselves on learning, listening and collaborating on the highest level of environmental standards. Our partnerships with local environmental groups expand our knowledge and resource base to constantly strive for the best in our personal lives, our office operations and our field work. / 我们以学习、倾听和协作最高级别的环境标准为荣。我们与当地环保组织的合作关系扩大了我们的知识和资源基础，使我们在个人生活、办公场所运营和现场工作中不断追求做到最好。

### Local Economic Impact / 对当地经济的影响

From the people we hire, to the businesses we support, we are connected to the local economy. Local, non-discriminatory hiring and the use of local suppliers and businesses connect us with our communities. Our team members are dedicated to strengthening the local economy, not only in our purchasing and hiring, but also through our volunteer organizations and lifestyles. / 从我们雇用的员工到我们支持的企业，我们都与当地经济息息相关。本地化、无歧视的招聘以及使用本地供应商和企业，将我们与社区紧密联系在一起。我们的团队成员致力于当地经济贡献力量，不仅在采购和招聘方面，还通过我们的志愿者组织和生活方式。



- ✓ [2021 & 2022 Sustainability Report](#) 2021年和2022年可持续发展报告
- ✓ [2021 & 2022 ESG Scorecard](#) 2021年和2022年ESG记分卡



# Share Structure & Ownership Mix / 股权结构与所有权组合



## Capital Structure / 资本结构

TSX.V: GLDC | OTCQX: CGLCF | FRA:756

Shares Outstanding / 流通在外股票	126,146,574
Options, RSUs/DSUs / 期权、限制股票单位 / 递延股票单位 <sup>1</sup>	11,868,668
Warrants / 认股权证 <sup>2</sup>	37,974,036
Fully Diluted / 完全稀释后	175,989,278
Price per Share / 每股股价*	C\$0.27
Market Capitalization / 市值*	C\$34.1 M / 3410万加元
Cash Position / 现金状况 / (Sep 3, 2024 / 截止2024年9月3日)	C\$7.1 M / 710万加元

\*as of August 30, 2024 / 截止2024年8月30日

## Analyst Coverage, Notes, and Newsletters / 分析师评级、研究报告和简报



**Jeff Clark**  
jeff\_clark@att.net



**Timothy Lee**  
tle@redcloudsecurities.com



**Dave Storms, CFA**  
dave@stonegateinc.com



**Lobo Tiggre**  
l@independentspeculator.com



**Steve Searles**  
ssearles@cgf.com



**Brien Lundin**  
brien\_lundin@jeffersoncompanies.com

## Shareholders / 股东

**Sprott**



**DELBROOK**  
CAPITAL

**IXIOS**  
Asset Management



MYRMIKAN CAPITAL LLC

Insiders/Advisors

12%

Institutional

29%

HNW & Retail

59%



KINGS ROAD CAPITAL



THE MANCAL GROUP

TERRA CAPITAL



懿德资产管理  
EDE ASSET MANAGEMENT INC



BALLINGAL INVESTMENT ADVISORS

<sup>1</sup> Options priced between \$0.345-\$0.79 with expiry between Aug 2025 to May 2029. See Appendix for more details. / 期权价格介于\$0.345至\$0.79之间，到期日在2025年8月至2029年5月之间。详见附录。  
<sup>2</sup> Warrants priced between \$0.50-\$0.70 with expiry between May 2025 to May 2026. Potential proceeds from warrant exercise is \$20.3M. See Appendix slide for more details / 认股权证价格介于\$0.50至\$0.70之间，到期日在2025年5月至2026年5月之间。行使认股权证的潜在收益为\$2030万。详见附录。

# Plans and Catalysts / 计划和催化剂



## 2024

## 2025



**Taurus Geological & Geochemical Domain Work**  
Taurus地质和地球化学领域工作

**2024 Exploration Program**  
2024年勘探计划

**2024 Exploration Program Drill Results**  
2024年勘探计划钻探结果

**Potential Resource Update**  
可能进行资源量更新

**2025 Exploration Program**  
2025年勘探计划



# Why Cassiar Gold? Checking the Boxes

## 为什么选择Cassiar Gold? 投资亮点



### INFRASTRUCTURE & PERMITS IN SAFE JURISDICTION / 安全辖区内的基础设施和许可证

- ✓ 2 Mine permits, bisected by provincial highway 37, 160 km of access roads, fully owned & permitted 300 tpd mill, 17 portals, 25 km underground workings, power & water access, permanent camp already in place / 拥有两个采矿许可证，37号省道将项目区一分为二，拥有160公里长的通道，完全拥有并获得许可的日均处理300吨矿石的工厂，17个入口，25公里长的地下作业区，水电供应，永久性采矿营地
- ✓ 100% owned, 59,000-hectare district-scale property in safe & stable British Columbia, Canada / 100%拥有位于加拿大卑诗省安全稳定辖区内59,000公顷地区规模项目区



### SIGNIFICANT EXPANSION & DISCOVERY POTENTIAL / 具有显著的资源扩展和发现潜力

- ✓ Potential to expand Taurus Resource of 1.4 Moz @ 1.14 g/t Au<sup>1</sup> in most directions laterally & at depth / Taurus推断资源量为140万盎司，金品位为1.14克/吨，在大部分方向有向水平和纵深扩展的潜力
- ✓ Potential for multiple bulk-tonnage/Taurus style satellite deposits across the land package / 在整个项目区内有可能形成多个大吨位或者类似Taurus风格的矿床
- ✓ Potential to expand multiple high-grade vein targets grading 10-20 g/t Au<sup>1</sup> along strike & down dip, with additional discovery potential for multiple blind parallel as well as stacked shear vein systems / 多个高品位矿脉靶区，金品位在10-20克/吨之间，成功延伸并且沿走向仍然开放，而且具备形成多个未出露平行及堆叠的剪切矿脉系统的潜力



### EXPERIENCED LEADERSHIP TEAM / 经验丰富的领导团队

- ✓ Well rounded & extremely successful group of geologists, engineers, operators, marketing and capital markets professionals with 250+ collective years in discovering, building, operating, and selling multi-billion dollar mining projects all over the world / 一支由经验丰富且功成名就的地质学家、工程师、运营商、市场营销和资本市场专业人士组成的团队，加起来拥有250多年在全球范围内发现、建设、运营和出售价值数十亿美元矿产项目的经验



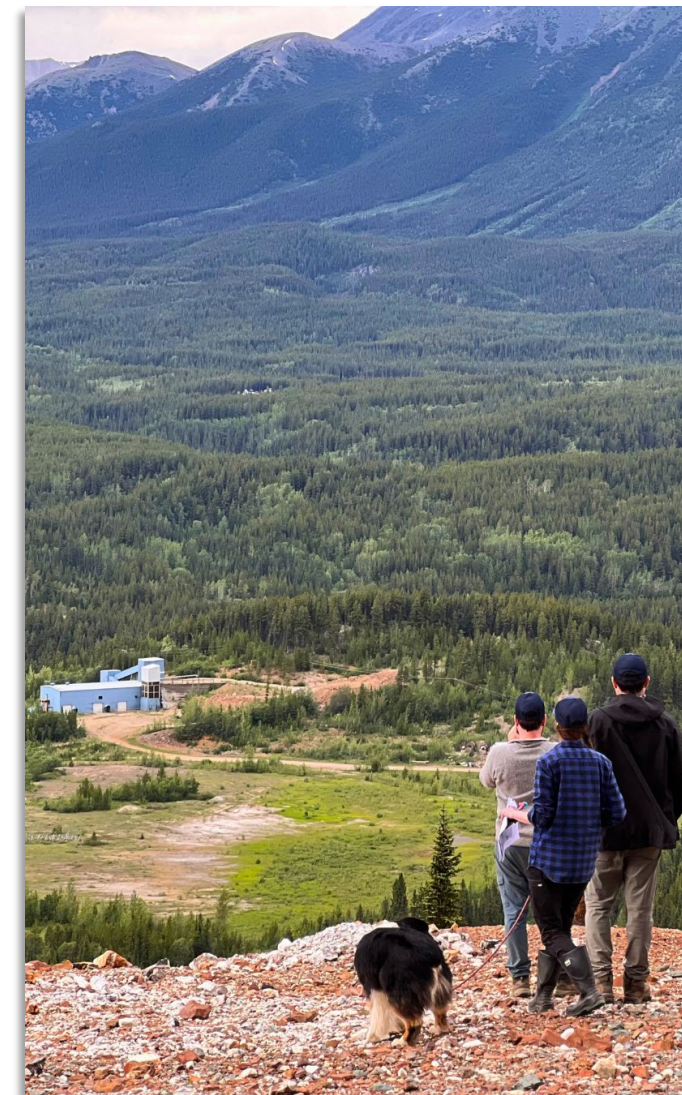
### COMMUNITY SUPPORTED & ENVIRONMENTALLY COMMITTED / 社区支持和环境承诺

- ✓ Collaborative & mutually supportive relationship with Community and Kaska Dena First Nations, including the training, hiring and development of local workforce and contractors / 与社区和Kaska Dena原住民建立对社会负责的合作关系，包括支持对本地劳动力和承包商的培训、雇用和发展
- ✓ Committed to advancing the projects under the highest ESG practices with continuous & transparent reporting / 致力于以最高的ESG实践和持续透明的报告推进项目



### UNDERVALUED WITH TREMENDOUS UPSIDE POTENTIAL / 价值被低估，增长潜力巨大

- ✓ C\$34.1 M Market Cap\* with significant leverage to the gold price, well capitalized, strong institutional support / 市值3410万加元\*，对金价有显著的杠杆作用，资金充足，得到机构的强力支持
- ✓ Focused on growing & de-risking the project to maximize Acquisition/Sale value via M&A Exit strategy / 专注于扩大规模并降低项目风险，通过并购退出策略实现收购/出售价值最大化
- ✓ Strategic optionality to "bootstrap" to production leveraging existing skillset, infrastructure and mine permits / 在战略上可以选择利用现有的技能、基础设施和采矿许可“启动”生产





# CASSIAR GOLD

TSX.V:GLDC | OTCQX:CGLCF | FRA:756

Follow us on: / 关注我们:



[@CassiarGold](#)



[Cassiar Gold Corp](#)



[Cassiar Gold Corp](#)



[@CassiarGold](#)

## Cassiar Gold Corp.

Suite 450 – 800 West Pender Street  
Vancouver, BC, V6C 2V6, Canada

### Contact: / 联系方式:

E-mail / 电邮: [ir@cassiargold.com](mailto:ir@cassiargold.com)

Direct / 电话: +1 (250) 212-2122

Website / 网站: [www.cassiargold.com](http://www.cassiargold.com)



TSX.V:GLDC | OTCQX:CGLCF | FRA:756

# Appendix 附录

# Cassiar North: Wings Canyon



- **Wings Canyon** – An area of intense iron-carbonate and sericite altered mafic volcanics with up to ~15% narrow sheeted quartz veining and disseminated pyritohedrons over ~500 x 180 m area. / 该区域为强烈的碳酸铁和绢云母蚀变镁铁质火山岩，在长约500米宽180米的区域内有高达约15%的狭窄片状石英脉和散布的黄铁矿。
- Alteration, veining & sulphide mineralization is similar in character to the Taurus deposit. / 蚀变、矿脉及硫化物矿化的特征与Taurus矿床类似。
- Historical drill intercepts include **128.5 m of 0.56 g/t Au and 90.6 m of 0.55 g/t Au.** / 历史上的钻探结果包括金品位0.56克/吨的128.5米矿段以及金品位0.55克/吨的90.6米矿段。<sup>1</sup>
- Limited exploration between Wings Canyon & the Taurus deposit which lies ~500 m to the northwest. / 在Wings Canyon和西北方向约500米处的Taurus矿床之间的勘探有限。



# Cassiar North: Snow Creek



- **Snow Creek** - Quartz veining, pyrite, and varying amounts of silica, sericite, and iron carbonate similar to the Taurus Deposit. / 石英脉、黄铁矿以及不同数量的二氧化硅、绢云母和碳酸铁，与Taurus矿床类似。





Examples of east-west trending sheeted vein sets with gold-bearing iron carbonate and sericite alteration envelopes observed in outcrop from the Newcastle target area at Cassiar North.

<sup>1</sup> Assay results from 2006 Assessment Report on the Table Mountain and Taurus Property, AR29235, Event Number: 4145387, prepared by Mike Glover.

- Approximately ~3 km long east-west corridor with shallow and outcropping quartz veining, pyrite, and silica, sericite, and iron carbonate alteration / 东西向约3公里长的走向带，浅露头石英脉，存在黄铁矿和硅化作用、绢云母和碳酸铁蚀变
- Rocks and Quartz veining are similar in character to those observed at the Taurus deposit, 2.5 km to the north of Newcastle / 在Newcastle以北2.5公里处观察到岩石和石英脉的特征类似于Taurus矿床
- Very limited historical drilling with samples exceeding 5 g/t.<sup>1</sup> / 历史上进行的钻探活动非常有限，样本中金品位超过5克/吨。<sup>1</sup>
- Six drill holes totaling 2,172 m drilled at Newcastle by Cassiar Gold during the 2023 field season / Cassiar Gold 2023年野外勘探季在Newcastle的6个钻孔累计钻探了2172米
- **Three drill holes totaling 1,245 m drilled at Newcastle in 2024 / 2024年在Newcastle的3个钻孔累计钻探了1245米**



# 2022 + 2023 Exploration Program Overview

## 2022年和2023年勘探计划概述



### Drill Campaign / 钻探活动

Project Area 项目区域	Drill Metres 钻探长度	Description / 说明
<b>Taurus Deposit</b> <b>Taurus矿床 (Cassiar North)</b>	23,167 m 23,167米	<ul style="list-style-type: none"> <li>~80% focused on 50-100 m step-out holes around the deposit to test for extensions of key mineralized trends and potentially expand the resource laterally. / 约80%集中在矿床周边50-100米的探边钻孔，以测试主要矿化趋势的延伸，并可能横向扩大资源量。</li> <li>~20% focused on infill, confirmation, and deeper drilling. Infill drilling will fill in gaps between widely spaced historical holes. Deeper drilling will focus on expanding mineralization at depth. / 约20%的钻探侧重于加密、确认和更深层的钻探。加密钻探将填补间隔较大的历史钻孔之间的空白。深层钻探将侧重于扩大矿化深度。</li> </ul>
<b>Outlying Targets</b> 外围 <b>靶区</b>	5,212 m / 5212米	<ul style="list-style-type: none"> <li>Drilling at high-priority regional targets such as Newcastle, Lucky, and step-out holes at Wings Canyon. / 在Newcastle、Lucky等高度优先的区域靶区进行了钻探，并在Wings Canyon进行探边钻探。</li> </ul>
<b>Cassiar South</b>	11,983 m / 11,983米	<ul style="list-style-type: none"> <li>Drilling focused on testing for blind parallel vein systems, known vein extensions, and vertical stacking of favourable stratigraphy. / 钻探重点是测试无法直接观察或预测的平行矿脉系统、已知矿脉延伸以及有利地层的垂直堆叠。</li> </ul>

### Exploration Fieldwork / 实地勘探

- Mapping and sampling work over a 34km<sup>2</sup> area including various regional targets such as Newcastle, Elan, Snow Creek, and Lucky with over 300 grab samples collected. / 在34平方公里的区域内进行了测绘和取样工作，包括Newcastle、Elan、Snow Creek和Lucky等多个区域靶区，收集了300多份抓取样本。
- Soil sampling program over a 3km<sup>2</sup> area from Taurus East to Snow Creek regional target with over 480 samples collected. / 在Taurus East至Snow Creek区域靶区3平方公里的区域内开展土壤取样工作，收集了480多份样本。
- Induced polarization (IP) survey over an 11km<sup>2</sup> area at Cassiar North. / 对Cassiar North 11平方公里区域进行了激发极化 (IP) 勘测。

### Research and Development (ongoing) / 研究与开发 (进行中)

- Geological domaining at Taurus – initial petrologic and petrographic review, leading to DMIS; LECO sulphur and cyanide soluble gold analysis. / Taurus地质区域划分-初步的岩石学和岩相学审查引出DMIS; LECO硫和氰化物可溶性金分析。

# Cassiar South: Bain Vein Drill Highlights

## Cassiar South: Bain矿脉钻探亮点



- Bain vein system produced 24,000 ounces of gold at an average grade of 13.71 g/t Au from 1993 to 1995.<sup>1</sup> / Bain矿脉系统在1993年至1995年期间生产了24,000盎司黄金，平均品位为13.71克/吨。<sup>1</sup>
- Historical drilling by previous operators in 1990/91, 2002, 2008 and 2009 in unmined areas returned significant mineralized intercepts, demonstrating the continuation of the vein system to the east to form a 1.5 km long corridor of known high-grade mineralization (see table on right). / 之前的运营商于1990/1991年、2002年、2008年和2009年在未开采区域进行了历史钻探，获得了大量矿化截面，证明矿脉系统向东延伸，形成了一条长达1.5公里的已知高品位矿化走廊（见右表）。
- The area was subject to additional mine development in 2009 to within 50 m of the unmined East Bain vein, allowing for ease of potential future underground and mining access. / 该区域在2009年进行过额外的矿山开发，距离未开采的East Bain矿脉50米以内，为未来潜在的地下和采矿通道提供了便利。

<sup>2</sup>Drill core lengths reported in the table on the right for **2021 East Bain/East Bain Ext drillholes** are ~80-95% of true width. / 右侧表格中报告的2021年East Bain/East Bain延伸段钻孔的钻芯长度约为真实宽度的80-95%。

<sup>3</sup>Pre-2021 composites calculated using historical assay data. Source documents for historical program details are as follows: / 用历史化验数据计算出的2021年之前的集合数据。历史勘探钻探项目详情的文件来源如下：

- Bain, J., (1991) Erickson Gold Mining Corp., Geophysical, Geological and Diamond Drilling Report On Exploration Conducted In 1990 And 1991 In The Cusac Area, Erickson Gold Mine Property, Cassiar District, Liard Mining Division Volume I. Assessment Report 21,547. May 30, 1991.
- Glover, M.J., (2002) Cusac Gold Mines Ltd., Table Mountain Gold Property, Diamond Drilling Report, Nu-Tara and Cordoba Claims, Liard Mining Division, East Bain Vein, 2002 Field Season. Assessment Report 27,079. December 3, 2002.
- Van Bui, P., (2009) Hawthorne Gold Corp., 2008 geochemical sampling, geophysics, and diamond drilling assessment report for the Cassiar Gold Property, McDame Creek area, Liard Mining District, Northern British Columbia. Assessment Report 30,623. March 6, 2009.

Significant unmined historical and 2021 drill results in the unmined Eastern Bain corridor with grades of >10 g/t Au (\*denotes Cassiar Gold drill holes) / 在未开采的Eastern Bain矿化走廊上有大量历史和2021年钻探结果，选取其中金品位超过10克/吨（\*表示Cassiar Gold的钻孔）

Target area 靶区区域	Drill Hole / 钻孔 <sup>3</sup>	From (m) 从 (米)	To (m) 到 (米)	Length <sup>2</sup> (m) 长度 (米)	Grade (g/t Au) 品位 (克/吨 黄金)
East Bain	C90-340	146.55	148.00	1.45	52.19
	C90-357	156.40	158.70	2.30	17.28
	C90-359	140.30	143.00	2.70	34.99
	C91-371	150.40	153.00	2.60	10.94
	C91-373	154.95	158.30	3.35	21.71
			incl. / 包括	0.90	71.57
	02BG-02	170.20	172.80	2.60	41.30
	02BG-03	126.20	132.80	6.60	6.65
			incl. / 包括	2.60	13.02
	02BG-04	186.6	188.8	2.20	8.34
	BNS-0003	150.32	157.2	6.88	12.45
	BNS-0005	111.83	115.72	3.89	10.50
	BNS-0006	134.82	139.01	4.19	4.35
	BNS-0007	125.10	128.40	3.30	28.61
	21EB-300*	182.79	187.56	4.77	35.10
		incl. / 包括 and / 和	0.53 0.40	105.00 270.00	
21EB-301*	143.76	150.13	6.37	12.64	
		incl. // 包括 and / 和	2.95 0.78	25.70 85.35	
East Bain Extension East Bain延伸段	21EBX-101*	203.16	207.71	4.55	3.27
	22EBX-103*	361.89	364.05	2.16	32.95
			incl. / 包括	0.6	123.5

<sup>1</sup> Zelligan, Moors, Jollette April 28, 2022. National Instrument 43-101 Technical Report on the Cassiar Gold Property, prepared for Cassiar Gold Corp. / Zelligan, Moors, Jollette, 2022年4月28日。为Cassiar Gold Corp.编写的关于Cassiar Gold黄金项目区的NI43-101技术报告。

# Cassiar South: Bain Vein Highlight

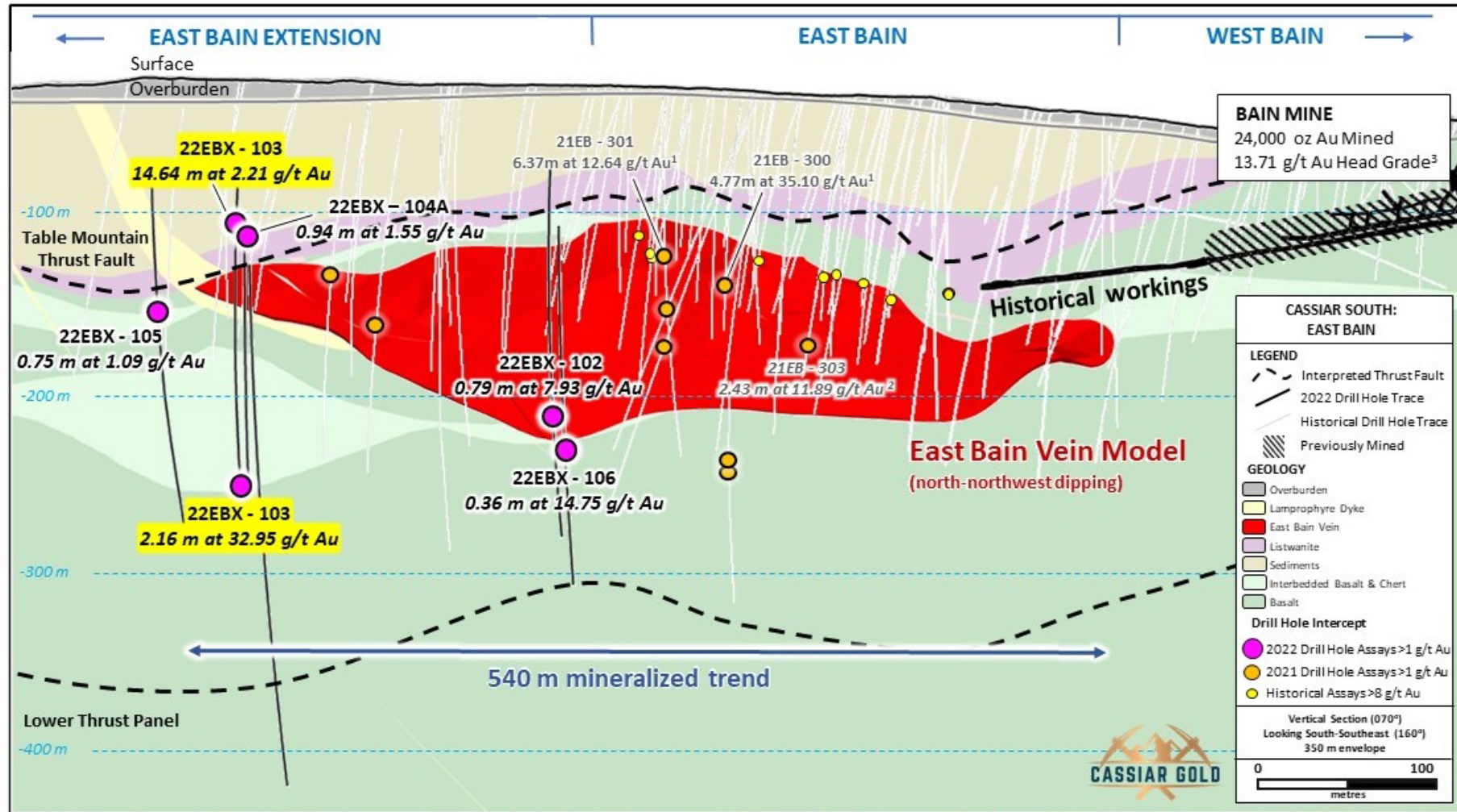
## Cassiar South: Bain矿脉亮点



04 APR 2023 / 2023年4

月4日

Cassiar Gold Extends Gold Mineralization at East Bain Intersecting 14.6 m of 2.21 g/t Au and 2.2 m of 32.95 g/t Au / Cassiar Gold在East Bain扩展金矿化, 获得金品位2.21克/吨的14.6米矿段以及金品位32.95克/吨的2.2米矿段



Visible gold encountered in 22EBX-103  
在22EBX-103中发现可见金

Vertical long section looking south-southeast at the Bain vein system with 2022 East Bain Extension drill hole results and select 2021 program intercepts. /Bain矿脉系统向东南方向望去的垂直长剖面图, 显示2022年East Bain延伸段钻孔结果和2021年钻探的部分截面。

<sup>1</sup> Cassiar Gold Extends Gold Mineralization at East Bain Intersecting 14.6 m of 2.21 g/t Au and 2.2 m of 32.95 g/t Au. Cassiar Gold在East Bain扩展了金矿化带, 得到金品位2.21克/吨的14.6米矿段以及金品位32.95克/吨的2.2米矿段。

East Bain延伸段钻孔结果和2021年钻探的部分截面。

# Fully Owned & Permitted Mill / 完全自有并获得许可的磨矿厂



Permitted Erickson Mill Facility, Cassiar Gold Project  
Cassiar Gold项目获得许可的Erickson磨矿设施



- Permitted 300 tpd mill produced **both gravity and flotation concentrates** that were sold offsite. Mill was last in production in 2007<sup>1</sup>, partially refurbished in 2010 and currently in good condition. / 获得许可日均处理300吨矿石的磨矿厂通过重力和浮选生产精矿，并在场外出售。磨矿厂最后一次生产是在2007年，2010年进行了部分翻新，目前状况良好。
- Covered by **Table Mountain Permit (M-127)**. / 在Table Mountain的许可证(M-127)范围内。
- Recoveries averaged 93%<sup>2</sup> and up to 96% at Cassiar South. / 平均采收率为93%，Cassiar South的采收率高达96%。

DRYER / 干燥机



SHAKING TABLE / 震动台



BALL MILL / 球磨机



# Cassiar Property Geology / Cassiar项目区地质情况



- Host rocks are a stacked sequence of gently dipping competent mafic volcanic rocks layered with weaker altered ultramafic (listwanite) and fine-grained sedimentary units (ophiolite sequence). / 寄主岩是堆叠的、轻微倾斜的强镁铁质火山岩层，与较弱的改造过的超镁铁质岩（滑石菱镁岩）相互层叠，以及细粒沉积岩单元（蛇绿岩序列）。
- Shallow dipping high strain zones with carbonate-sericite alteration are localized along the weaker listwanite and sedimentary units, acting as structural control and fluid conduits to vein systems. / 沿着较弱的滑石菱镁岩和沉积岩单元局部分布着浅倾斜的高变形带，伴有碳酸盐-硅云母蚀变，对矿脉系统起到结构控制和流体通道的作用。
- Gold-bearing veins formed in stacked mafic volcanic panels in NW-side down, apparent normal shear zones that accommodate displacement between weaker units. / 含金矿脉形成于堆叠的岩浆火山岩板块中，位于西北向下的表现正常的剪切带中，该剪切带可容纳较弱的地质单元之间的位移。



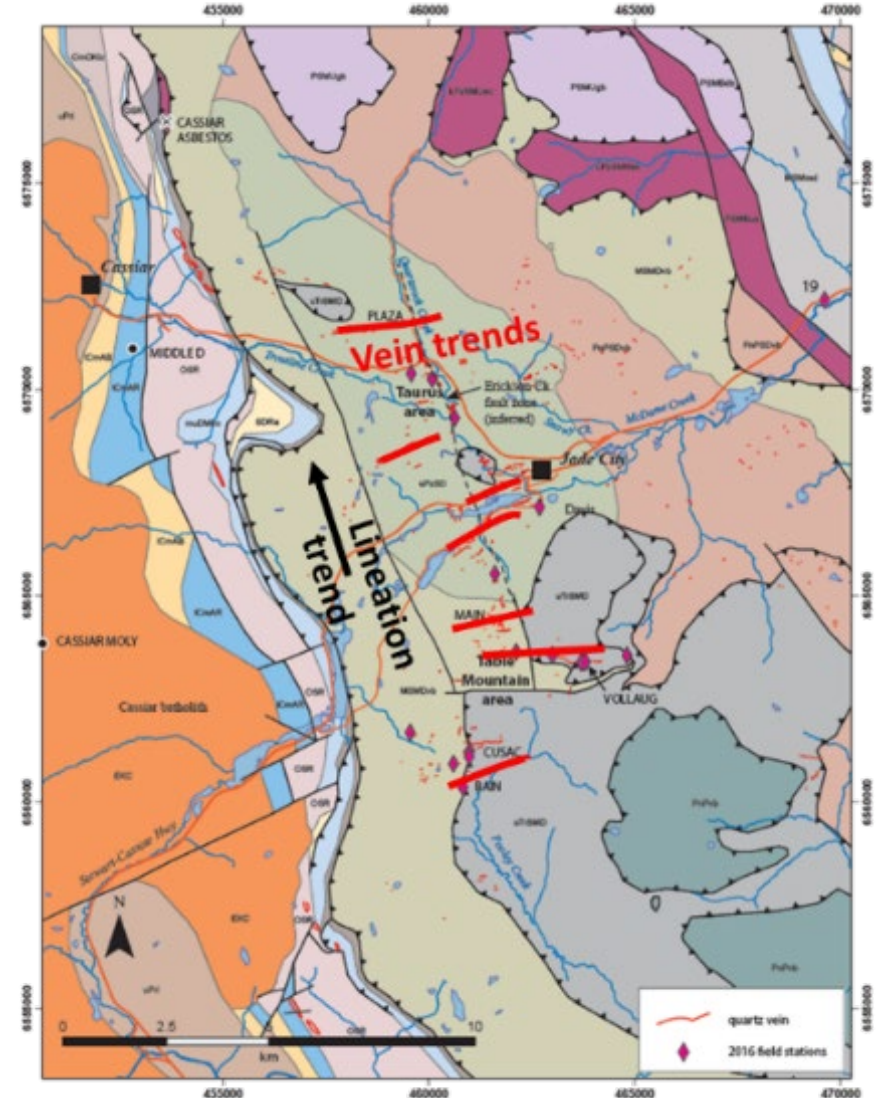
**Pillowed Mafic Volcanic**  
枕状镁铁质火山岩



**Listwanite**  
滑石菱镁岩

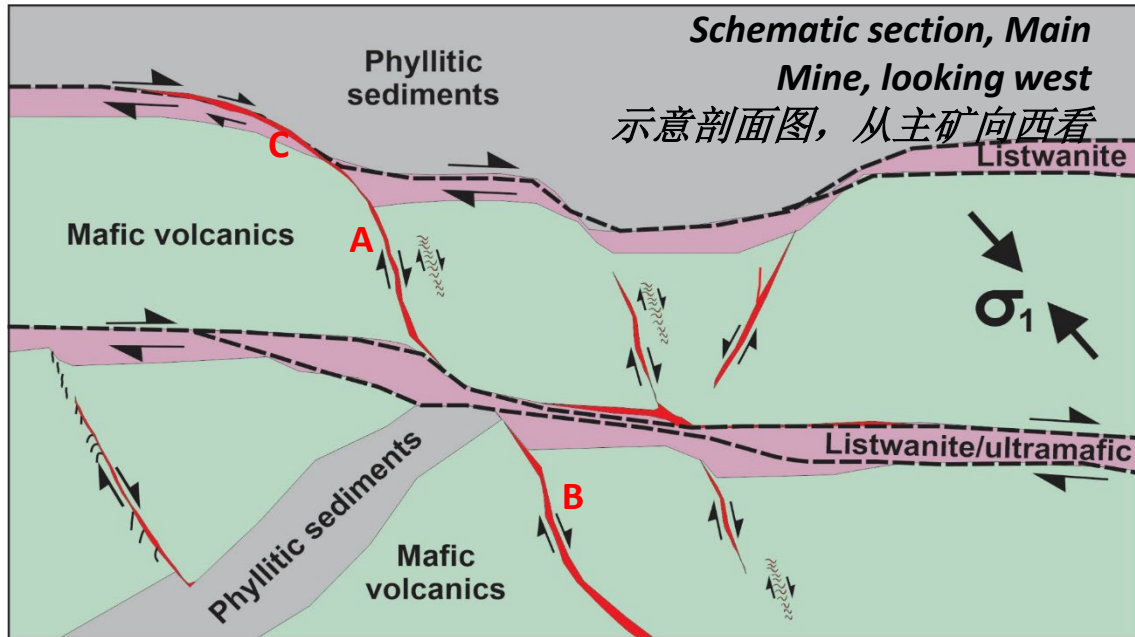


**Carbonaceous Sediments**  
碳质沉积岩



# Cassiar South: Classic Orogenic Gold Veins

## Cassiar South: 经典造山型金矿脉



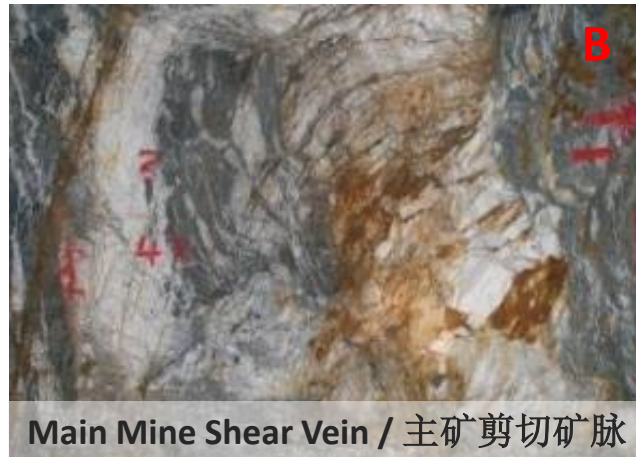
- Classic orogenic-style, quartz-carbonate pyrite-tetrahedrite + visible-gold-bearing shear veins with free gold.<sup>1</sup> / 经典造山型风格，含石英-碳酸盐-黄铁矿-硫铜矿+可见金的剪切矿脉，带有游离金。<sup>1</sup>
- Veins occur in mafic volcanic rocks stacked between low-angle listwanite-bearing thrust surfaces and lenses of fine-grained clastic sediments. / 矿脉存在于镁铁质火山岩中，这些火山岩堆叠在低角度的含滑石菱镁岩推覆面和细粒碎屑沉积岩的透镜状结构之间。
- Mined veins average 2-3 m thick with local strike lengths of >600 m (eg. Vollaug, Bain) and extend 30-150 m down dip. / 开采的矿脉平均厚度为2-3米，局部走向长度超过600米（例如Vollaug、Bain），向下倾延伸30-150米。
- Veins are spaced 10s to 100s of meters apart and stacked in multiple mafic units -- **potential for untested parallel and vertical repetition.** / 矿脉间距10至100米，堆叠在多个镁铁质单元中-存在未经过测试的平行和垂直重复的可能性。



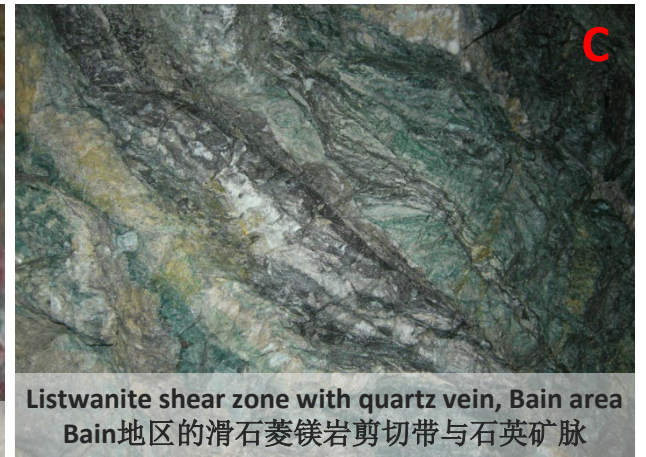
Quartz with gold + pyrite bands  
石英与含金+黄铁矿带



West Bain Vein / West Bain矿脉



Main Mine Shear Vein / 主矿剪切矿脉



Listwanite shear zone with quartz vein, Bain area  
Bain地区的滑石菱镁岩剪切带与石英矿脉

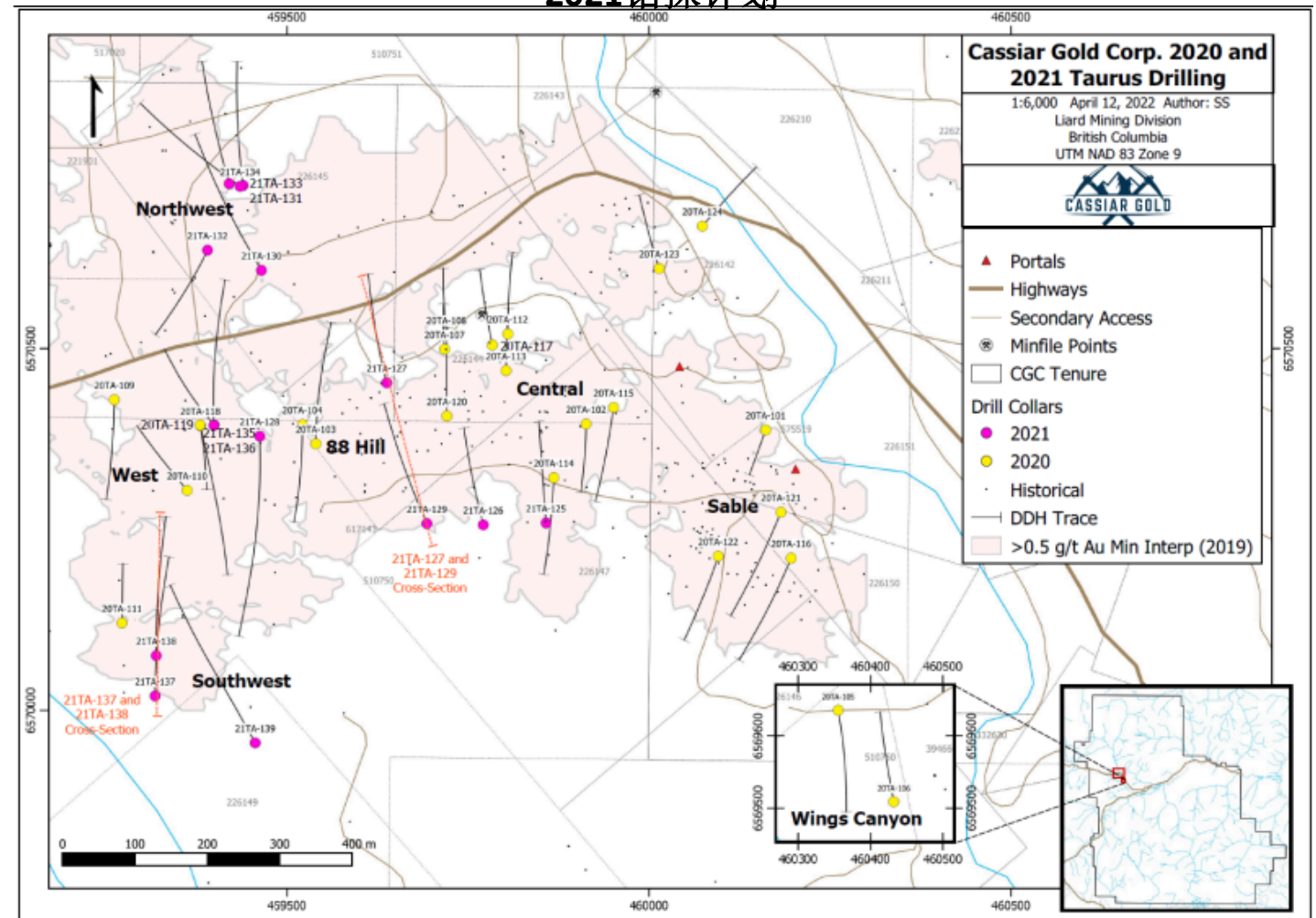
# Basis of 2022 Mineral Resource Estimate

## 2022年矿产资源量估测依据



- 2022 NI43-101 Mineral Resource Estimate based on 462 drill holes (~56,500 m) drilled by previous operators and Cassiar Gold.<sup>1</sup> / 2022年基于之前的运营商和Cassiar Gold钻探的462个钻孔（约56,500米）进行的NI43-101矿产资源量估测。<sup>1</sup>
- Cassiar drilled 39 holes in the Taurus area totaling 8,800 m in 2020 and 2021 intended to: / 2020年和2021年Cassiar在在Taurus区域共钻探了39个钻孔，累计钻探长度为8800米，目的是：
  - Confirm historical drill data; / 确认历史钻探数据;
  - Infill several widely drilled portions of the deposit; and / 对矿床中已广泛钻探的几个部分进行加密钻探; 以及
  - Test expansion potential though step-out drilling which resulted in the expansion of the deposit footprint. / 通过探边钻探测试开采潜力，从而扩大矿床的覆盖范围。
- Both programs succeeded in confirming higher grade corridors of mineralization and filled in gaps in the mineralization model. / 这两项计划都成功确认了高品位的矿化走廊，并填补了矿化模型中的空白。

### Cassiar North Taurus 2020 – 2021 Drill Plan / Cassiar North Taurus 2020 – 2021钻探计划



<sup>1</sup> Zelligan, Moors, Jollette April 28, 2022. National Instrument 43-101 Technical Report on the Cassiar Gold Property, prepared for Cassiar Gold Corp. / Zelligan, Moors, Jollette, 2022年4月28日, 为Cassiar Gold Corp.编写的关于Cassiar Gold项目区的NI43-101技术报告。

# Cassiar South: 2022 Drill Program Highlight Intercepts

## Cassiar South: 2022年钻探项目截取的矿段亮点



Target Area 靶区区域	Drillhole 钻孔		From 从	To 到	Length 长度 m (米)	Grade 金品位 g/t / 克/吨
East Bain Extension East Bain延伸段	22EBX-103 <sup>1</sup>		159.5	174.1	<b>14.64 m</b>	<b>2.21 g/t Au</b>
		<i>incl. / 包括</i>	160.2	168.7	8.52 m	3.22 g/t Au
		<i>incl. / 包括</i>	164.7	168.7	<b>3.98 m</b>	<b>5.05 g/t Au</b>
		<i>incl. / 包括</i>	361.9	364.1	<b>2.16 m</b>	<b>32.95 g/t Au</b>
		362.3	362.8	0.55 m	<b>123.50 g/t Au</b>	
	22EBX-106 <sup>2</sup>		281.6	281.9	0.36 m	<b>14.75 g/t Au</b>
Main Mine	22MM-001 <sup>1</sup>		115.9	131.8	<b>15.9 m</b>	0.98 g/t Au
		<i>incl. / 包括</i>	120.6	126.4	5.9 m	1.50 g/t Au
	22MM-002 <sup>1</sup>		255.5	256.1	<b>0.6 m</b>	<b>4.18 g/t Au</b>
			<b>269.0</b>	<b>294.1</b>	<b>25.2 m</b>	<b>0.59 g/t Au</b>
			<b>308.6</b>	<b>332.8</b>	<b>24.2 m</b>	<b>0.61 g/t Au</b>
	22MM-003 <sup>1</sup>		<b>126.9</b>	<b>177.2</b>	<b>50.2 m</b>	<b>0.66 g/t Au</b>
		<b>197.0</b>	<b>212.6</b>	<b>15.6 m</b>	<b>1.22 g/t Au</b>	
		<b>219.8</b>	<b>228.9</b>	<b>9.0 m</b>	<b>1.01 g/t Au</b>	
Vollaug	22VOL-701 <sup>1</sup>		<b>28.0</b>	<b>30.0</b>	<b>2.0 m</b>	<b>4.80 g/t Au</b>
		<i>incl. / 包括</i>	29.0	30.0	<b>1.0 m</b>	<b>7.03 g/t Au</b>
	22VOL-701A <sup>1</sup>		<b>28.7</b>	<b>29.9</b>	<b>1.2 m</b>	<b>5.77 g/t Au</b>
Cusac	22CU-407 <sup>1</sup>		<b>21.1</b>	<b>24.5</b>	<b>3.4 m</b>	<b>2.35 g/t Au</b>
		<i>incl. / 包括</i>	21.5	22.3	<b>0.8 m</b>	<b>7.20 g/t Au</b>

<sup>1</sup>Drill core lengths are reported here. True widths for these intervals have not been established / 此处报告的是钻芯长度，这些矿段的真实宽度尚未确定。

<sup>2</sup>Drill core lengths are reported here. Intercepts for the main Bain vein are 80-95% of true width / 此处报告的是钻芯长度。Bain矿脉的截距为实际宽度的80-95%。

Visible gold encountered in 22EBX-103  
22EBX-103中发现的可见金



Visible gold encountered in 22WB-203  
22WB-203中发现的可见金





# Cassiar North: 2022 Drill Program Highlight Intercepts

## Cassiar North: 2022年钻探项目截取的矿段亮点



Target Area 靶区区域	Drillhole 钻孔	From 从	To 至	Length 长度* m (米)	Grade 金品位 g/t / 克/吨	
Taurus East	22TA-142	<b>129.8</b>	<b>152.0</b>	<b>22.20 m</b>	<b>1.50 g/t Au</b>	
		<i>incl. / 包括</i>	132.2	133.0	0.75 m	<b>9.61 g/t Au</b>
	22TA-146	<b>12.9</b>	<b>23.4</b>	<b>10.50 m</b>	<b>4.47 g/t Au</b>	
		<i>incl. / 包括</i>	13.8	17.0	3.25 m	<b>11.12 g/t Au</b>
		<i>with / 与</i>	15.4	15.9	0.50 m	<b>45.30 g/t Au</b>
		<i>incl. / 包括</i>	20.4	21.1	0.75 m	<b>12.65 g/t Au</b>
22TA-167	226.0	239.7	13.70 m	<b>2.24 g/t Au</b>		
22TA-169	4.5	11.1	6.60 m	<b>22.44 g/t Au</b>		
	<i>incl. / 包括</i>	10.3	11.1	0.80 m	<b>174.50 g/t Au</b>	
Taurus Central	22TA-149	<b>8.2</b>	<b>44.9</b>	<b>36.75 m</b>	<b>1.30 g/t Au</b>	
		<i>incl. / 包括</i>	29.1	34.4	<b>5.29 m</b>	<b>4.09 g/t Au</b>
22TA-152	<b>157.4</b>	<b>177.6</b>	<b>20.20 m</b>	<b>1.33 g/t Au</b>		
	<i>incl. / 包括</i>	157.4	157.9	0.45 m	<b>25.90 g/t Au</b>	
	<b>279.7</b>	<b>308.8</b>	<b>29.05 m</b>	<b>1.17 g/t Au</b>		
Sable	22TA-148	<b>8.7</b>	<b>38.8</b>	<b>30.10 m</b>	<b>1.41 g/t Au</b>	
		<i>incl. / 包括</i>	8.7	12.4	3.65 m	2.76 g/t Au
		<i>and / 和</i>	21.5	23.9	<b>2.35 m</b>	<b>9.08 g/t Au</b>
		<i>with / 与</i>	23.0	23.4	<b>0.35 m</b>	<b>41.40 g/t Au</b>
		68.9	102.0	<b>33.15 m</b>	<b>0.87 g/t Au</b>	
		<i>incl. / 包括</i>	68.9	88.3	<b>19.45 m</b>	<b>1.14 g/t Au</b>

\* Drill core lengths are reported here. True widths for these intervals have not been established / \* 此处报告的是钻芯长度，这些矿段的真实宽度尚未确定。

Target Area 靶区区域	Drillhole 钻孔	From 从	To 至	Length 长度* m (米)	Grade 金品位 g/t / 克/吨	
Taurus West	22TA-158	<b>337.0</b>	<b>409.2</b>	<b>72.25 m</b>	<b>1.09 g/t Au</b>	
		12.3	89.5	77.2 m	<b>0.67 g/t Au</b>	
	22TA-174	364.2	388.5	24.3 m	<b>1.13 g/t Au</b>	
		22TA-176	<b>10.7</b>	<b>108.7</b>	<b>98.00 m</b>	<b>1.28 g/t Au</b>
		<i>incl. / 包括</i>	41.7	45.8	<b>4.10 m</b>	<b>12.02 g/t Au</b>
	22TA-176	<i>with / 与</i>	43.8	45.1	1.30 m	<b>25.87 g/t Au</b>
		<i>incl. / 包括</i>	65.0	65.6	0.55 m	<b>17.80 g/t Au</b>
		22TA-178	<b>51.4</b>	<b>103.4</b>	<b>52.00 m</b>	<b>0.60 g/t Au</b>
	22TA-178	<i>incl. / 包括</i>	93.0	93.7	0.69 m	<b>14.85 g/t Au</b>
		<i>incl. / 包括</i>	116.0	<b>186.6</b>	<b>70.65 m</b>	<b>0.76 g/t Au</b>
22TA-180	<i>incl. / 包括</i>	153.5	161.1	<b>7.60 m</b>	<b>2.02 g/t Au</b>	
	22TA-180	177.5	249.1	<b>71.6 m</b>	<b>1.54 g/t Au</b>	
	<i>incl. / 包括</i>	222.0	245.5	<b>23.5 m</b>	<b>3.68 g/t Au</b>	
	<i>incl. / 包括</i>	222.0	223.0	1.0 m	<b>37.40 g/t Au</b>	
22TA-182	<i>incl. / 包括</i>	194.7	253.5	<b>58.8 m</b>	<b>1.34 g/t Au</b>	
	<i>incl. / 包括</i>	240.2	253.0	<b>12.8 m</b>	<b>2.41 g/t Au</b>	
	<i>incl. / 包括</i>	250.6	251.2	0.5 m	<b>13.75 g/t Au</b>	
Taurus Southwest	22TA-160	69.0	88.9	<b>19.95 m</b>	<b>0.72 g/t Au</b>	
		214.0	234.3	20.35 m	0.51 g/t Au	
	<b>22TA-161</b>	<b>8.2</b>	<b>180.1</b>	<b>171.88 m</b>	<b>0.66 g/t Au</b>	
	22TA-172	<b>28.0</b>	<b>167.4</b>	<b>139.35 m</b>	<b>0.61 g/t Au</b>	
		<i>incl. / 包括</i>	48.7	64.1	15.35 m	1.31 g/t Au
		<i>with / 与</i>	61.3	61.9	0.65 m	6.28 g/t Au
	22TA-172	<i>incl. / 包括</i>	140.9	141.4	0.55 m	5.17 g/t Au
22TA-175A		189.0	239.0	<b>50.05 m</b>	<b>0.61 g/t Au</b>	
<i>incl. / 包括</i>	224.7	233.2	8.45 m	1.54 g/t Au		

\* Drill core lengths are reported here. True widths for these intervals have not been established / \* 此处报告的是钻芯长度，这些矿段的真实宽度尚未确定。

# The Rich History of the Cassiar Gold District

## Cassiar金矿区的悠久历史



1872

Discovery of placer gold at Dease Creek started the **gold rush** in the area. 1877 saw a record-breaking **72 oz gold nugget** recovered from McDame Creek. / Dease Creek砂金的发现掀起了该地区的**淘金热**。1877年，在McDame Creek发现了一块创纪录的**72盎司金块**。

1934

Discovery of **first gold-bearing quartz veins** followed by ~40 years of only small-scale mining by various operators. / 发现**第一批含金石英矿脉**后，40多年来，各个经营者只进行过小规模开采。

1979

Start of **larger-scale mining operations** at Main, Vollaug, Cusac, Bain (Cassiar South) and Taurus (Cassiar North) mines producing a total of 350Koz gold in total until 1998. / 开始对Main、Vollaug、Cusac、Bain（Cassiar South）和Taurus这些矿山（Cassiar North）进行**大规模采矿作业**，到1998年共生产了35万盎司黄金。

1994

Discovery of **Taurus West** deposit by International Taurus Resources. / International Taurus Resources发现了**Taurus West**矿床。

2008

**Consolidation of the entire Cassiar gold property** by Hawthorne Gold and advancement of drilling on the property. / Hawthorne Gold**整合了整个Cassiar黄金项目区**，并推进了该矿区的钻探工作。

2011

Hawthorne subsequently became **Wildsky Resources**, who continued exploration of the Cassiar North and South areas until 2018. / Hawthorne随后成为**Wildsky Resources**，该公司继续对Cassiar北部和南部区域进行勘探，一直到2018年。

2019

Margaux entered into an agreement to acquire 100% interest in the project. / Margaux签订协议，收购该项目100%的权益。

2020

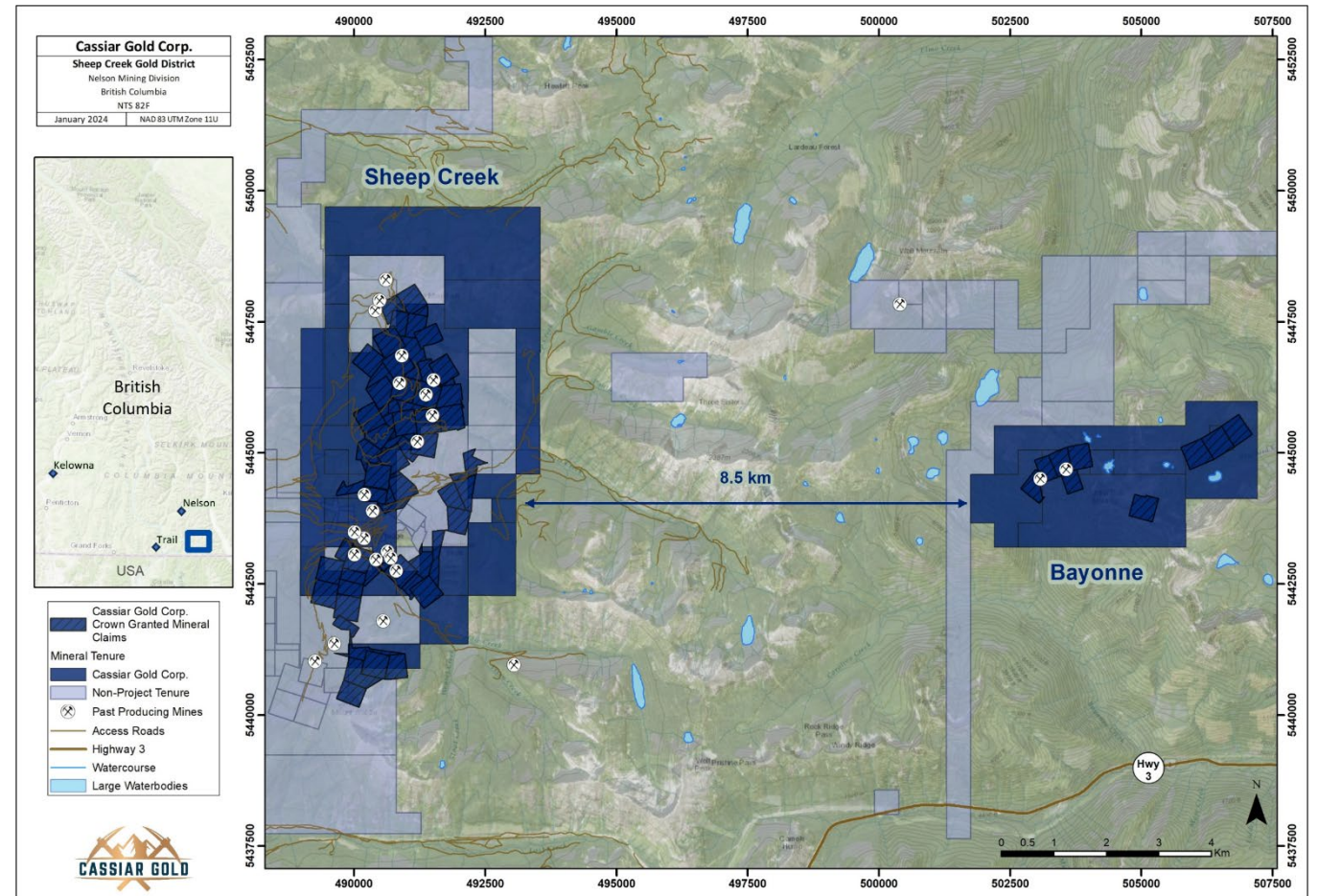
Margaux exercised its option to fully acquire the project and rebranded to **Cassiar Gold Corp.** Cassiar Gold completed a 5,000 m-drilling program that confirmed the potential to expand the Taurus Deposit. / Margaux行使了全资收购该项目的选择权，并更名为**Cassiar Gold Corp.**。Cassiar Gold完成了一项5000米的钻探计划，证实了扩大Taurus矿床面积和资源量的潜力。



# Sheep Creek: Camp Overview / Sheep Creek: 采矿营概述



- 3,872-ha camp consisting of the Sheep Creek and Bayonne properties. / 3872公顷的采矿营地由Sheep Creek和Bayonne两个区域组成。
- Third largest past-producing orogenic gold district in BC behind Barkerville and Bralorne. / 卑诗省仅次于Barkerville和Bralorne的第三大原生金矿区。
- Total production from 1900 to 1951 from 1.72 Mt of ore: **742,000 ounces of gold @ 14.7 g/t Au**, ~365,000 ounces of silver, 377,000 lbs. of lead and 312,000 lbs. of zinc.<sup>1</sup> / 1900年到1951年，从172万吨的矿石中一共生产了：**74.2万盎司黄金（品位14.7克/吨）**、约36.5万盎司白银、37.7万磅铅和31.2万磅锌。<sup>1</sup>
- Geological analogue to Barkerville and the Cassiar Gold District** – camp hosts 60-70 gold-bearing quartz veins with the potential to carry high-grade gold; little modern exploration conducted since the 1950s. / **与Barkerville和Cassiar金矿区的地质条件类似**-采矿营内有60-70个含金石英矿脉，可能蕴藏高品位金矿；自20世纪50年代以来，几乎没有进行过现代化勘探。
- Full compilation and review of exploration opportunities and approaches for exploration now underway. / 目前正在全面整理和审查勘探机会和勘探方法。



<sup>1</sup> August 17, 2017, NI43-101 Technical Report on the Sheep Creek Project authored by Robert A. Lane, MSc, PGeo. / 2017年8月17日，由专业地质学家、理学硕士Robert A. Lane撰写的Sheep Creek项目NI43-101技术报告

# Sheep Creek: Exploration Potential / Sheep Creek: 勘探潜力



## Sheep Creek Property (2,732 ha) / Sheep Creek项目区 (2732公顷) :

- 10 km belt with 60+ known veins / 10公里长的成矿带，有60多条已知矿脉
- Individual veins exploited over 950 m strike length, up to 500 m depth / 对单条矿脉的开发长度超过950米，深度达500米
- Strong structural & stratigraphic control to veining / 地质构造和地层控制对矿脉影响很大

## Bayonne Property (1,140 ha) / Bayonne项目区 (1140 公顷) :

- Veins hosted entirely within granodiorite / 矿脉完全处于花岗闪长岩内
- 10 known veins / 已知有10条矿脉
- Historic production from the Bayonne Main vein and A vein splay (950 m strike, 250 m down dip) / 历史产量来自Bayonne主矿脉和A矿脉分支（走向950米，向下倾斜250米）

In addition to extensions of known veins and additional parallel veins, there is untested potential for unexposed stacked veins where additional, competent folded units lie below the areas of historical mining, especially in anticlinal hinges.

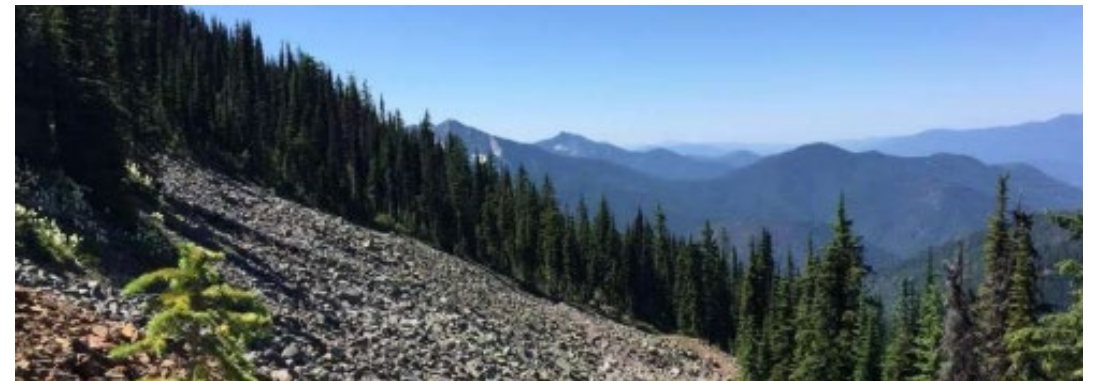
除了已知矿脉和额外的平行矿脉延伸之外，还存在未经测试的潜力，可能存在未显露的堆积矿脉，尤其是在历史采矿区域下方的具有竖向褶皱的区域。



Sheep Creek Gold Belt Mine  
Sheep Creek金矿



Sheep Creek Veining  
Sheep Creek发现的矿脉



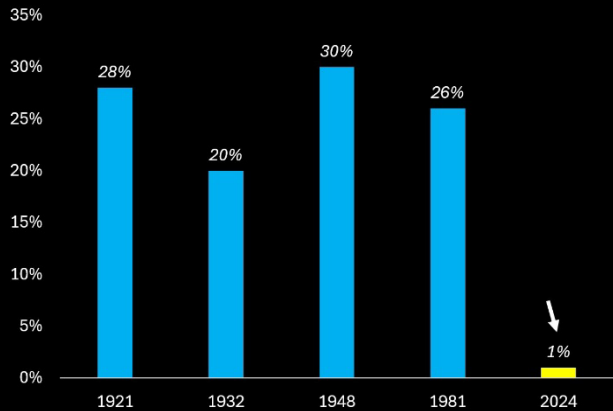
Donnybrook adit, Sheep Creek Project  
Sheep Creek项目Donnybrook矿坑入口

# A Look at Gold in the Global Market

## 对黄金在全球市场的展望



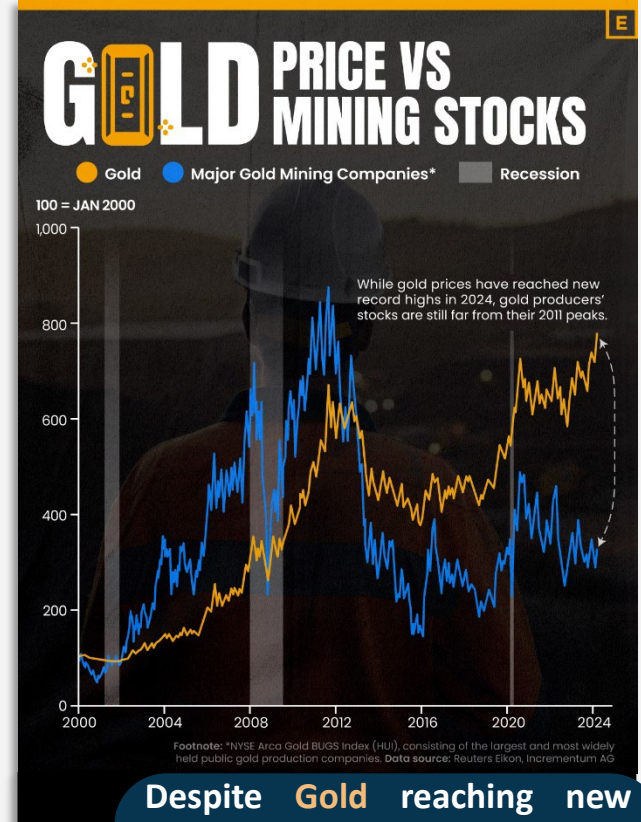
Gold & Gold Miners as a % of Total Global Assets



Source: Siberjunge.de; Erste Group Research; Lawrence Lepard  
For 2024 Data: Bloomberg; McKinsey & Company; Tavi Costa © 2024 Crescat Capital LLC

"The multitude of structural forces driving metals has yet, in my opinion, to prompt a major re-rating of the valuations of these businesses, which continue to linger at historically depressed levels." / "在我看来，推动金属价格的众多结构性力量尚未引发对采矿企业估值的重大重新评估，相关公司的股票继续在历史上较低水平徘徊。"

- Tavi Costa of Crescat Capital / Crescat Capital的策略师Tavi Costa

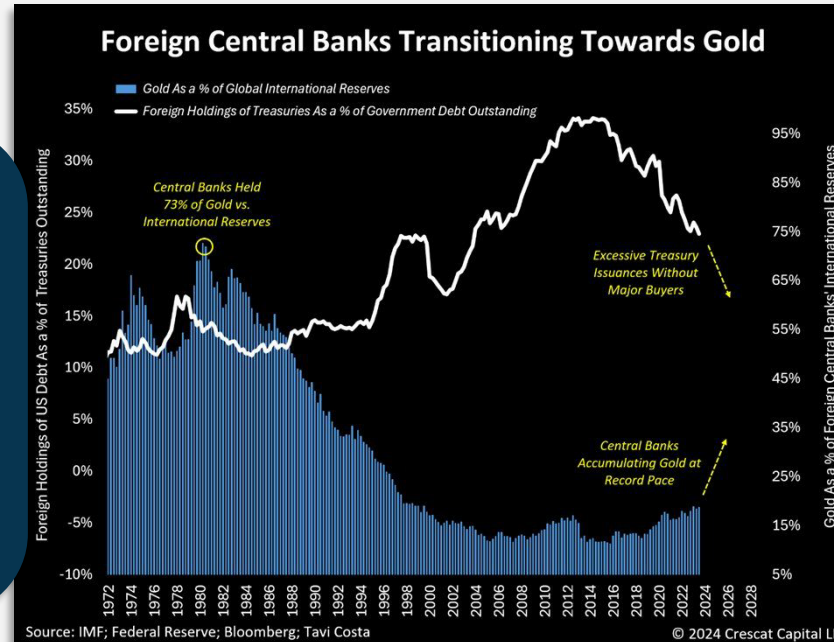


Despite Gold reaching new record highs in 2024, gold miners are still far from their 2011 peaks. / 尽管黄金价格在2024年创出历史新高，但金矿开采企业的股票价格远未达到2011年时的峰值。

Seeing the trend? / 看到这个趋势了吗?

Central banks are transitioning towards Gold at a record pace! / 各国央行正在以创纪录的速度买入黄金!

- Tavi Costa of Crescat Capital charts this development / Crescat Capital的Tavi Costa绘制了这一发展趋势图



# Recent Canadian M&A / 加拿大最近的并购活动



## 2024



Equinox Gold's (EQX-TSX) acquisition of a 40% interest in the Greenstone gold mine for US\$995 M / Equinox Gold (EQX-TSX) 斥资9.95亿美元收购了Greenstone金矿40%的股权



Calibre Mining's (CXB-TSX) all-share acquisition of Marathon Gold (MOZ-TSX) for C\$345 M / Calibre Mining(CXB-TSX)全股份收购Marathon Gold (MOZ-TSX), 交易金额为3.45亿加元



## 2023



Osisko Mining's (OSK-TSX) sale of a 50% interest in the Windfall Gold Project to Gold Fields for C\$634 M / Osisko Mining(OSK-TSX)将其在Windfall金矿项目50%的权益以6.34亿加元的价格出售给Gold Fields



B2Gold's (BTO-TSX, BTG-NYSE) acquisition of Sabina Gold & Silver for C\$1.1 B / B2Gold (BTO-TSX, BTG-NYSE)以11亿加元收购Sabina Gold & Silver



## 2022



Agnico's (AEM-TSX/NYSE) acquisition of the remaining 50% interest in the Canadian Malartic Mine + Yamana's Canadian assets for US\$1 B cash + 36 M shares / Agnico(AEM-TSX/NYSE)以10亿美元现金和3600万股股票收购加拿大Malartic矿山剩余50%的权益以及Yamana的加拿大资产



## 2020



Evolution Mining's (EVN-ASX) acquisition of Newmont's (NEM-NYSE) Red Lake Mine for up to US\$475 M / Evolution Mining(EVN-ASX)以高达4.75亿美元收购Newmont (NEM-NYSE)的Red Lake金矿



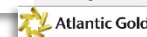
Kirkland Lake bought Detour Gold for C\$4.9 B / Kirkland Lake以49亿加元收购了Detour Gold



## 2019



St. Barbara's (SBM-ASX) acquisition of Atlantic Gold for C\$722 M / St. Barbara (SBM-ASX)以7.22亿加元收购了Atlantic Gold



Newcrest's acquisition of a 70% interest in Imperial Metals' (III-TSX) Red Chris Mine for US\$806 M / Newcrest收购了Imperial Metals(III-TSX)的Red Chris金矿70%的权益, 交易金额为8.06亿美元



## 2017



Alamos Gold's (AGI-TSX/NYSE) acquisition of Richmond Mines for US\$770 M / Alamos Gold(AGI-TSX/NYSE)以7.7亿美元收购了Richmont Mines



# Capital Structure Breakdown / 资本结构细分



## Options Schedule / 期权行使计划

Options Expiry and Price 期权到期时间和行权价格	# Issued 发行数量
Aug 2025 / 2025年8月 @ \$0.75	1,150,000
Mar 2026 / 2026年3月 @ \$0.60	1,690,668
Nov 2026 / 2026年11月 @ \$0.79	470,000
Sep 2027 / 2027年9月 @ \$0.66	1,900,000
Sep 2028 / 2028年9月 @ \$0.345	1,370,000
May 2029 / 2029年5月 @ \$0.28	1,255,000
<b>Total 总计</b>	<b>7,835,668</b>
<b>Potential proceeds from the exercise of options 期权行权可能带来的收益</b>	<b>C\$4.3M 430万加元</b>

## Warrant Schedule / 认股权证行使计划

Warrant Expiry and Price 认股权证到期时间和行权价格	# Issued 发行数量
May 2025 / 2025年5月 @ \$0.50	764,700
May 2025 / 2025年5月 @ \$0.70	6,613,335
Jun 2025 / 2025年6月 @ \$0.70	135,001
Dec 2025 / 2025年12月 @ \$0.50	7,690,441
May 2026 / 2026年5月 @ \$0.50	22,770,559
<b>Total 总计</b>	<b>37,974,036</b>
<b>Potential proceeds from the exercise of warrants 认股权证行权可能带来的收益</b>	<b>C\$20.3M 2030万加元</b>