



# CASSIAR GOLD CORP.

TSX.V:GLDC OTCQX:CGLCF

## KEY BOARD AND MANAGEMENT

**Stephen Letwin**   
Chairman

**Marco Roque**   
President & CEO

**David Rhys**   
Chief Technical Advisor

**Jill Maxwell**   
VP Exploration

**Steve Robertson**   
Director

**Chris Stewart**   
Director

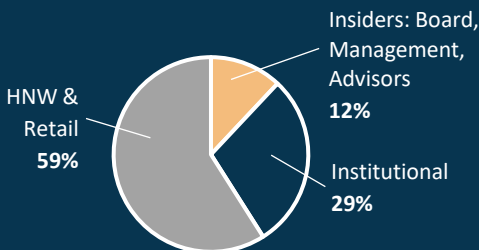
**James Maxwell**   
Director

**Jorge Ramiro Monroy**   
Capital Markets Advisor

## CAPITAL STRUCTURE (as of January 7, 2025)

Shares Outstanding	127,213,002
Total Warrants	39,080,664
Total Options, RSUs/DSUs	11,848,668
Fully Diluted	178,142,334
Market Cap	CAD \$ 25.4 M
Cash Position (Jan 2025)	CAD \$ 4.9 M

## SHARE OWNERSHIP



## KEY SHAREHOLDERS

Delbrook Capital  
Commodity Discovery Fund  
Sprott Asset Management  
US Global  
L1 Capital  
Crescat Capital  
M3SC Fund  
Emerging Markets Capital  
Ixios Asset Management  
Myrmikan Capital  
The Mancal Group  
Terra Capital

## CONTACT

ir@cassiargold.com  
+1 (250) 212-2122  
www.cassiargold.com

## VANCOUVER OFFICE

Suite 450 – 800 West Pender Street  
Vancouver, BC, V6C 2V6, Canada

Cassiar Gold Corp. is focused on the 100% owned, district-scale orogenic Cassiar Gold Property located in northern BC, Canada. Spanning 590 km<sup>2</sup>, the district-scale property has a notable production history, a substantial bulk-tonnage gold resource, dozens of high-grade quartz gold vein targets (up to 10-20 g/t Au)<sup>1</sup> and multiple regional exploration targets.

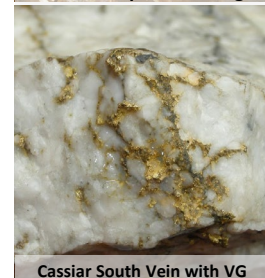
## INVESTMENT HIGHLIGHTS

- INFRASTRUCTURE & PERMITS IN SAFE JURISDICTION:** 2 Mine permits, highway access, 160 km access roads, 17 portals, permitted 300 tpd mill, 25 km underground workings, power.
- SIGNIFICANT EXPANSION & DISCOVERY POTENTIAL:** NI43-101 Inferred resource of 1.4Moz @ 1.14g/t Au estimate<sup>1</sup> – open in most directions laterally & at depth.
- EXPERIENCED LEADERSHIP TEAM:** Well rounded group of geologists, engineers, operators, marketing and capital markets professionals with 250+ collective years of experience.
- COMMUNITY SUPPORTED & ENVIRONMENTALLY COMMITTED:** Collaborative relationship with Kaska Dena First Nations. Advancing the projects under the highest ESG practices.
- UNDERVALUED WITH TREMENDOUS UPSIDE POTENTIAL:** C\$25.4M Mkt Cap, C\$4.9M Cash, attractive entry point @ ~US\$10.22 EV/Oz.

## TWO IMPORTANT OROGENIC GOLD DISTRICTS IN BC



Taurus Deposit Veining



Cassiar South Vein with VG

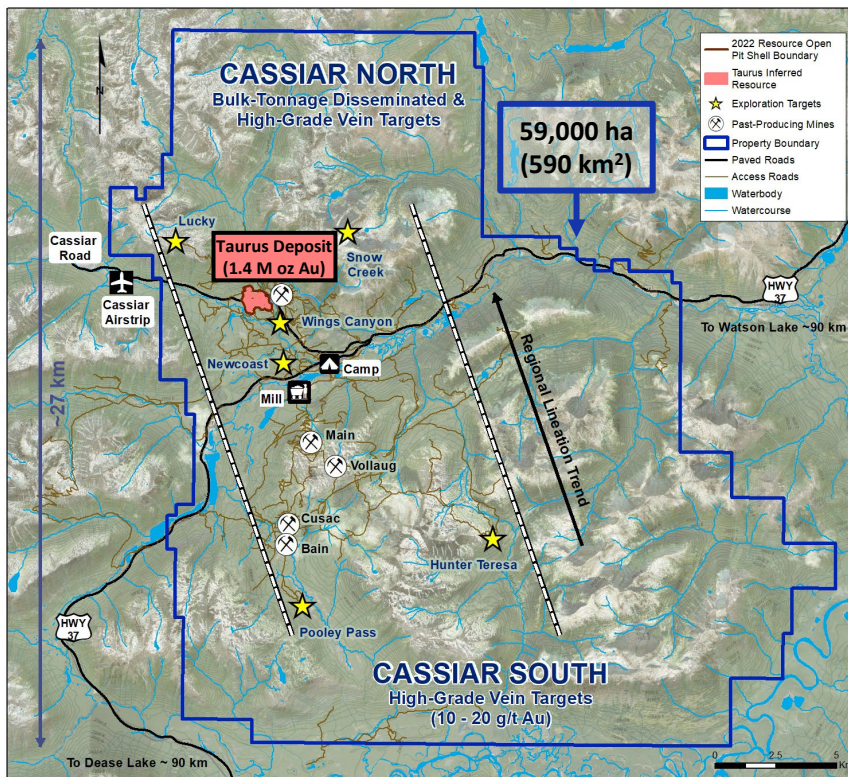
## CASSIAR GOLD FLAGSHIP PROPERTY

- Site of 1872 **Cassiar Gold Rush** with total historic gold production of over 425,000<sup>1</sup> oz produced
- Similar geological setting to the Abitibi Greenstone Belt, West Africa and Western Australia
- Exceptional access and existing infrastructure and mine permits in place from past mining activity
- Hosts a bulk-tonnage gold resource and several high-grade gold vein targets

## SHEEP CREEK SECONDARY ASSET

- 3<sup>rd</sup> largest orogenic gold district in BC with past production (1899-1951) of 742,000 oz Au @ 14.7 g/t Au<sup>2</sup>
- Excellent exploration potential** – Review underway for exploration opportunities and approaches in 2025

<sup>1</sup> Zelligan, Moors, Jollette April 28, 2022. National Instrument 43-101 Technical Report on the Cassiar Gold Property, prepared for Cassiar Gold Corp.  
<sup>2</sup> August 17, 2017, NI43-101 Technical Report on the Sheep Creek Project authored by Robert A. Lane, MSC, PGeo.



## CASSIAR GOLD PROPERTY HIGHLIGHTS

- 100% owned, 59,000-hectare orogenic gold property
- +25 high-grade and bulk-tonnage gold targets over 15 km strike
- Property bisected by Provincial Hwy 37 into two project areas: Cassiar North & Cassiar South
- Includes 48-person permanent camp, mine permits, owned & permitted 300 tpd mill, 25 km of underground workings, 1.2 km airstrip and 160 km of access roads

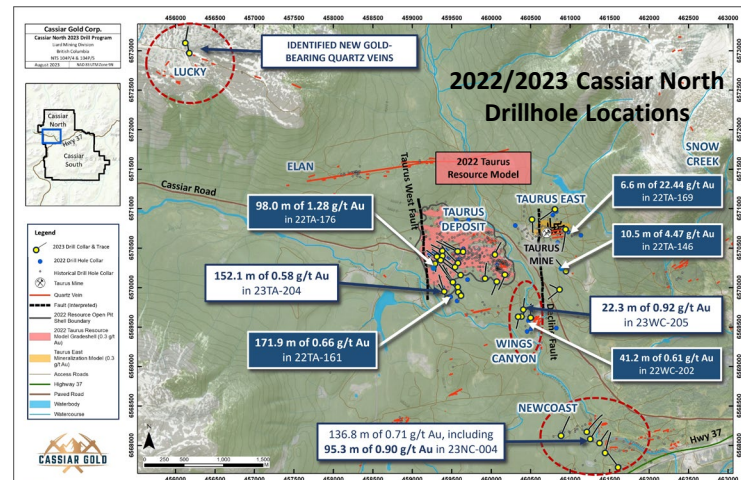
## CASSIAR NORTH

- Host of the Taurus Gold Deposit containing 2022 NI43-101 Inferred Resource of 1.4Moz Au @ 1.14 g/t Au<sup>1</sup>
  - 90% of ounces occur within 150 m from surface
  - Open-pittable, flat-lying mineralization occurring from surface to 270 m depth with excellent road access
  - Mineralization at Taurus remains open laterally and at depth with multiple targets being advanced
- Several regional prospects with potential to host Taurus-style mineralization in outlying areas

## CASSIAR SOUTH

- 315,000 oz historical high-grade production<sup>1</sup> in four vein systems with 15 portals and >25 km of underground workings
- 18,000 m of drilling from 2021-2023
  - confirmed continuity of high-grade mineralization at Bain
  - identified extensions of mineralization near existing underground infrastructure
  - identified offset vein segments and new veins adjacent to known systems
- Past-producing veins remain open along strike and potential exists for new veins to be discovered parallel to and below known veins

<sup>1</sup> Zelligan, Moors, Jolette, April 28, 2022. National Instrument 43-101 Technical Report on the Cassiar Gold Property, prepared for Cassiar Gold Corp., and references therein



Cassiar North plan map of locations of 2022-2023 drilling at outlying target areas (red dashed circles) relative to the Taurus deposit. Surface projection of the 2022 resource estimate +0.3 g/t Au grade shell is shown for reference (from Zelligan, Moors, Jolette 2022).

## MILESTONES & UPCOMING CATALYSTS

